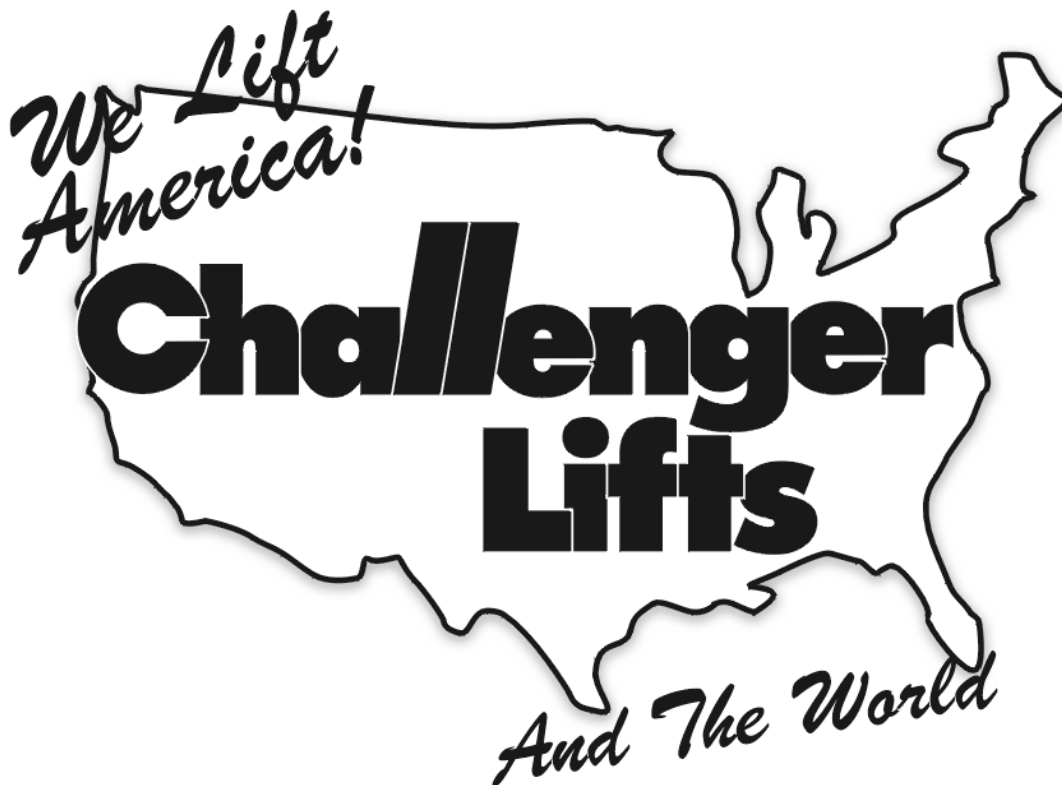


MODEL 66000

PORTABLE MID-RISE LIFT

(6,000 lb Capacity)

Installation, Operation and Maintenance Manual



IMPORTANT!!!

**READ THIS MANUAL COMPLETELY BEFORE INSTALLING OR
OPERATING THE LIFT**

*200 CABEL STREET, P.O. BOX 3944
LOUISVILLE, KENTUCKY 40201-3944*

E-Mail - sales@challengerlifts.com

Web Site - www.challengerlifts.com

OFFICE (502) 625-0700

FAX (502) 587-1933

CONTENTS

| | | |
|-----|--|-----|
| 1. | Introduction..... | 1 |
| 2. | Limited Function of this Lift..... | 2 |
| 3. | General Specifications..... | 2 |
| 4. | Parts List | 2 |
| 5. | Safety Instructions | 3 |
| 6. | Positioning/Installation Instructions..... | 4 |
| | • Lift Positioning/Installation..... | 4 |
| | • Electrical/Hydraulic Power Unit Installation | 4 |
| 7. | Operation of This Lift | 5 |
| | • Purging Air from Hydraulic System | 5 |
| | • Mechanical Safety Lock Operating Test..... | 5 |
| | • Positioning a Vehicle on This Lift | 5 |
| | <Raising a Vehicle> | 5 |
| | <Lowering a Vehicle> | 5 |
| | <Backing Vehicle Off of This Lift> | 5 |
| 8. | Maintenance of This Lift | 6 |
| | <Periodic Inspections>..... | 6 |
| 9. | Trouble Shooting | 7 |
| 10. | Illustrated Parts List | 8,9 |

1. INTRODUCTION

Never attempt to operate this lift unless you have first read and understand all of the operating instructions and product warnings that are contained in this Manual Labels affixed to this lift itself. The failure to do so could result in serious bodily injury and property damage.

Contact your supplier immediately if you have any questions regarding the contents of this Manual or of the Warning Labels.

Always keep this Manual nearby, for convenient reference while operating this lift. Should either the Manual or any of the Warning Labels become lost or damaged, obtain replacement copies from your supplier immediately.

NOTICE

This Manual and Warning Labels affixed to this lift itself, utilize the following Signal Words and definitions in all safety instructions:

DANGER: The failure to avoid the potential hazard could result in death or catastrophic bodily injury.

WARNING: The failure to avoid the potential hazard could result in serious bodily injury.

CAUTION: The failure to avoid the potential hazard could result in minor bodily injury or in damage to property.

WARRANTY

We warrant this lift to the original purchaser against defective materials or workmanship for one full year from the date of invoice, provided that this lift is used in accordance with all applicable instructions and warnings.

Our obligation is limited to the repair or replacement of defective components that are returned to the local Lift Supplier, freight pre-paid, with proof of purchase.

This warranty shall not apply to any damage resulting from the alteration, misuse, abuse, unauthorized repair or improper maintenance of this Lift.

2. LIMITED FUNCTION OF THIS LIFT

WARNING

This Lift was designed solely for the purpose of raising passenger vehicles and light pick-up trucks a few feet off the ground to facilitate the performance of tire, brake, oil and body work. Never attempt to use this lift to raise vans, trucks having extended wheelbases, or any other load that exceeds this Lift's rated capacity. This Lift has been designed to bear such unauthorized loads. A loss of the load might therefore occur, which could result in serious bodily injury.

DANGER

Never use this Lift for under-the-vehicle work, to avoid the risk of being crushed. Never work under any vehicle unless it has been provided with independent stable support, by appropriate means, to prevent it from dropping.

3. GENERAL SPECIFICATIONS

| | |
|-------------------------------|---|
| Maximum Capacity | 6,000 lbs |
| Minimum Table Height | 3 7/8 inches |
| Maximum Table Height | 48 inches |
| Electrical Requirements | 115V, 50/60 Hz, 1 phase |
| Lifting Time..... | 30 seconds |
| Dual Safety Lock System | Mechanical Safety Lock Hydraulic Velocity Fuse Valving |

4. PARTS CONTENT

| | |
|--|-------------|
| Oil..... | 1.5 Gallons |
| Electric/Hydraulic Power Unit | 1 set |
| Swing Arms | 4 pieces |
| Rubber Pad Adapters..... | 4 pieces |
| Stacking Adapters | 4 pieces |
| Plugs with Hole..... | 2 pieces |
| Hydraulic Hose | 12 feet |
| Female Adapter (NPT) coupled with hydraulic hose | 1 piece |
| Safety Lock Release Lever | 1 piece |

5. SAFETY INSTRUCTIONS

WARNING

This Lift must be operated and maintained in strict accordance with the procedures and warnings contained in this manual to avoid the risk of serious bodily injury.

The maximum lifting capacity is 6,000 lbs. And any attempt to lift unauthorized loads in excess of that amount could result in a loss of the load and serious bodily injury.

No modifications shall be made to this Lift without the prior consent of the manufacturer.

- 5-1) Never attempt to use this Lift for any purpose other than raising passenger vehicles and light pick-up trucks a few feet off the ground to perform tire, brake, oil and body work.
- 5-2) Never attempt to use this Lift to raise vans, trucks having extended wheelbases, or any other loads that exceed its rated capacity of 6,000 lbs.
- 5-3) Never use this Lift for any under-the-vehicle work.
- 5-4) Never work under any vehicle unless it has been provided with independent and stable support, by appropriate means to prevent it from dropping.
- 5-5) Never attempt to operate this Lift unless you have had prior training and experience in the operation of this Lift, and you have also read and understood all of the operating and safety instructions contained in this Manual.
- 5-6) Never allow any untrained or unauthorized persons to operate this Lift.
- 5-7) Never operate this Lift if any of the safety devices are inoperative.
- 5-8) Never allow untrained or unauthorized persons to position vehicles on this Lift.
- 5-9) Never work on a raised vehicle unless the safety lock has first been engaged.
- 5-10) Never operate this Lift when any bystanders are present at the site.
- 5-11) Never attempt to operate this Lift unless you have first read and understood the contents of the warning signs affixed to this Lift. Never remove the warning signs from this Lift.
- 5-12) Always stay clear of this Lift when it is being raised or lowered.
- 5-13) Never attempt to drive a vehicle onto this Lift unless you have first confirmed that it is in its fully lowered position.
- 5-14) When abnormalities arise, always stop this Lift instantly with the "OFF" control on the power unit.
- 5-15) Never attempt to block open or override the "OFF" control on the power unit.
- 5-16) Never raise the vehicle if someone is inside.
- 5-17) Never permit anyone to ride this Lift while being raised or lowered.
- 5-18) Never operate the power unit while any persons are working on a raised vehicle.
- 5-19) Always confirm that there are no obstructions under this Lift, before lowering it.

- 5-20) Always release the safety lock first, before attempting to lower this Lift.
- 5-21) Always confirm that this Lift is in its fully lowered position, before backing a vehicle off of it.
- 5-22) Always inspect this Lift carefully prior to its first use each day. Never attempt to operate it if any of its components appear to be damaged or abnormal. Therefore, inspect this Lift before each use, for visual indications of damage.
- 5-23) Always confirm that only genuine manufacturer's parts have been used in making repairs.
- 5-24) Always confirm that the power cord has been disconnected, and the power source has been safety locked out, prior to performing any maintenance on this Lift.
- 5-25) Before energizing this Lift to test its operation always confirm that all maintenance personnel are standing clear of this Lift.
- 5-26) Always perform all scheduled visual inspections and preventive maintenance in a timely manner and promptly replace any damaged or worn components.
- 5-27) Never attempt to service this Lift while it is in a raised position. The loosening of any oil fitting could cause this Lift to fall. Always confirm that this Lift is in its fully lowered position before attempting to service it.
- 5-28) Always keep this Lift area clean, and free of any obstruction or debris. Always clean up any spilled grease and oil as quickly as possible.
- 5-29) Always keep the affixed warning label clean and legible. Contact your supplier immediately for a free replacement, if ever required.
- 5-30) Always position the swing arms and adapters to provide unobstructed clearance, before attempting to drive a vehicle onto this Lift. Never hit, or run over, this swing arms, as that could cause damage to this Lift or the vehicle.
- 5-31) Always position the adapters so that they will contact the vehicle at the lifting points recommended by the vehicle manufacturer. First, raise this Lift until the adapters make initial contact with the vehicle. After confirming that they are making secure contact at the desired lifting points, raise the Lift to desired working height.
- 5-32) Never attempt to use adapters or attachments that were not provided by the manufacturer.

NOTE

The removal or installation of some vehicle components could result in a shift in the vehicles center of gravity, and cause the vehicle to become unstable.

6. POSITIONING/INSTALLATION INSTRUCTIONS

❖ LIFT POSITIONING/INSTALLATION

1. This Lift is portable and can easily be moved by a dolly.
2. This Lift should only be installed and used on level concrete floors having a minimum thickness of five inches. The concrete must have a minimum strength of 4,000 PSI, and must be aged at least 30 days.

3. Position the electric/hydraulic power unit so that a vehicle will never drive over the hydraulic hose, to prevent damage.
4. This Lift is designed for indoor use only. The electric / hydraulic power unit is not water-proof and, if installed outdoors, electric shock or damage to the electric / hydraulic power unit could occur.

❖ **ELECTRIC/HYDRAULIC POWER UNIT INSTALLATION**

1. Attach the electric / hydraulic power unit to the power unit stand.
2. Firmly tighten the female adapter (NPT) at the end of the hydraulic hose to the male outlet-fitting on the hydraulic power unit. Confirm that no foreign objects have entered the hydraulic hose to the male outlet-fitting on the hydraulic power unit. Confirm that no foreign objects have entered the hydraulic hose.
3. Some hydraulic oil has been provided in each of the cylinders for anti-corrosion purposes during shipping (approx. 3 oz. in each cylinder). Remove the temporary plug from each cylinder, drain all of the oil and then install the replacement plugs that are equipped with safety valves. (For the detailed procedure, refer to the tag attached to the temporary plug in one of the cylinders).
4. Position the electric / hydraulic power unit well clear of this Lift, to assure that it will not obstruct the safe operation of this Lift.

7. OPERATION OF THIS LIFT

❖ **PURGING AIR FROM HYDRAULIC SYSTEM**

1. Press the "UP" control on the power unit and raise this Lift about 16 inches. Then press the "DOWN" control and lower this Lift. Continue this process several times until all of the air is purged from the hydraulic system.

❖ **MECHANICAL SAFETY LOCK OPERATION TEST**

1. Actuate the safety lock release lever and confirm that the safety latch unlocks.
2. Press the "UP" control on the power unit and raise this Lift to its highest position, to confirm that the safety latch will automatically "CLICK" into the safety lock position at both of the established settings. When this Lift reaches its highest position, immediately stop pressing the "UP" control to protect the motor.
2. Actuate the safety lock release lever and press the "DOWN" control. Confirm that the safety latch unlocks and that this Lift will lower.

❖ **POSITIONING A VEHICLE ON THIS LIFT**

1. Fully lower this Lift and drive the vehicle over it so that its center of gravity will be centered on this Lift, for maximum "LEFT TO RIGHT" stability. Neither its front nor rear wheel should contact this Lift. Position front wheel drive vehicles and light pick-up trucks slightly toward the rear of this Lift, but position rear wheel drive vehicles more toward the center of this Lift, for maximum "FRONT TO REAR" stability.
2. Engage the side brake.

3. Position this Lift arm saddle adapters to contact the vehicle at the lifting points recommended by the vehicle manufacturer.
4. If required, use stacking adapters to improve vehicle stability on this Lift.

< RAISING A VEHICLE >

1. Press the "UP" control and raise this Lift slowly until all of the saddle adapters contact the vehicle.
2. Visually confirm that each adapter is making full contact with the vehicle at that the proper lifting point.
3. Raise this Lift until the vehicle's wheels are slightly off the floor, and confirm that the vehicle is stably positioned. Confirm that the safety lock is functioning properly.

< LOWERING A VEHICLE >

1. Before attempting to lower this Lift, first raise it over 1" and actuate the safety lock release lever, to disengage the safety lock.
2. Continue actuating the safety lock release lever while pressing the "DOWN" control, and lower this Lift slowly until the safety lock latch passes the lowest safety lock position, (at a lift height of approx.20 inches). In the event of an emergency, cease actuating the safety lock release lever.

CAUTION

When the safety lock is engaged, always raise this Lift slightly before attempting to actuate the safety lock release lever. This will protect the wire cable from becoming stretched, which could result in a safety lock malfunction.

< BACKING VEHICLE OFF LIFT >

1. Disengage the parking brake.
2. Confirm that this Lift is in its fully lowered position, before attempting to back the vehicle off of this Lift.
3. Remove all of the adapters from the swing arms, and push the swing arms inboard of this Lift.
4. Slowly and carefully back the vehicle off of this Lift.

8. MAINTENANCE OF THIS LIFT

1. Inspect this Lift prior to its first use each day. Never operate it if any of its components appear to be damaged or abnormal. Use only genuine manufacturer's parts in making repairs.
2. Confirm that the power cord has been disconnected, and that the power source has been safety locked out, prior to performing any maintenance on this Lift. Before energizing and testing this Lift after servicing it, confirm that all personnel are clear of this Lift.
3. Perform all scheduled visual inspections and preventive maintenance in a timely manner, and promptly replace any damaged or worn components.
4. Never service this Lift while it is in a raised position. The loosening of any oil fitting could cause this Lift to fall. Confirm that this Lift is in its fully lowered position before attempting to service it.
5. Keep this Lift area clean, and free of any obstructions or debris. Clean up any spilled grease or oil as quickly as possible.

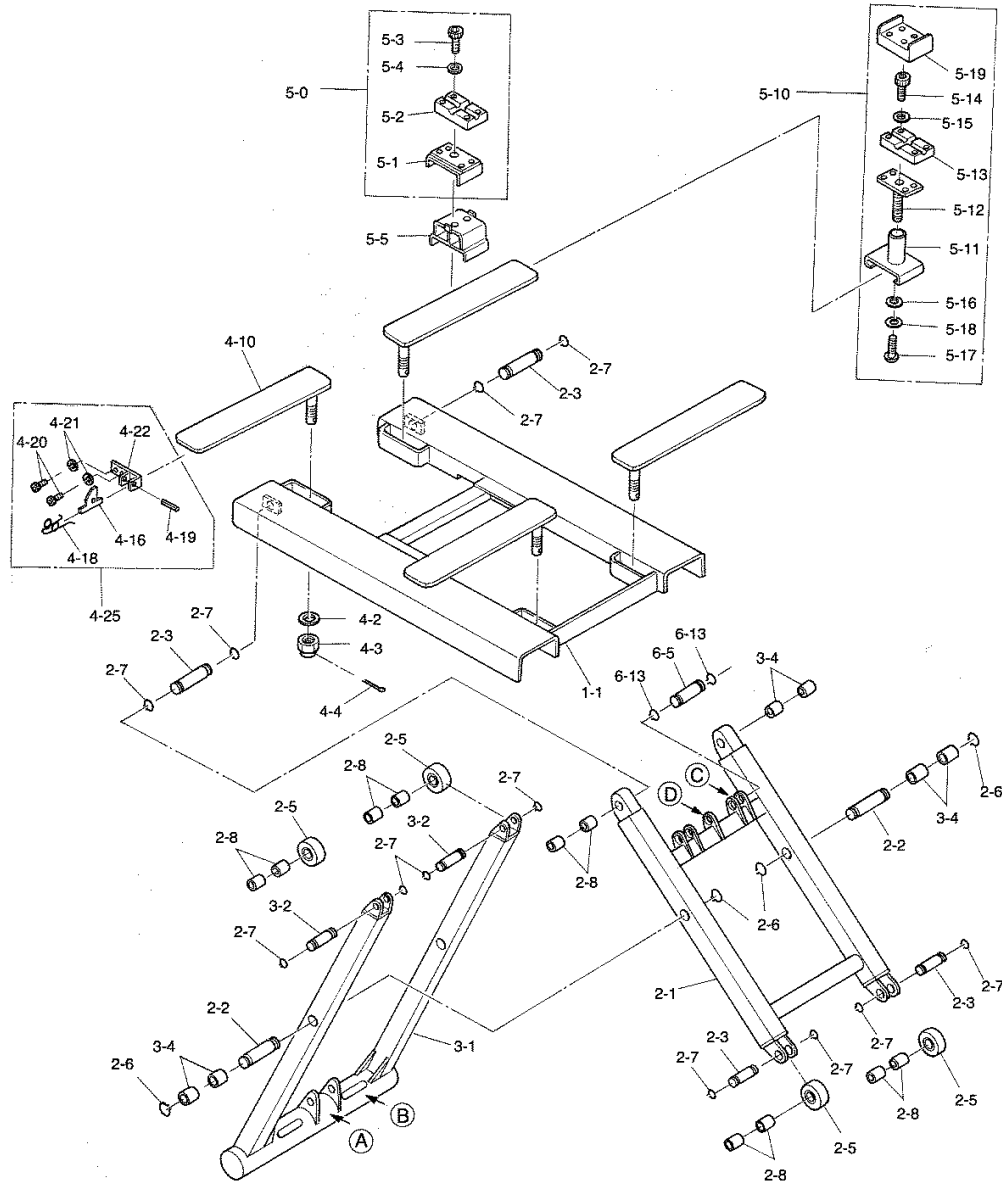
<PERIODIC INSPECTIONS>

It is essential that the following inspections of this Lift be performed prior to its first use each day, to assure safe operation:

COMPONENTS TO BE INSPECTED

| | |
|-------------------------|---|
| Safety Lock Latch | Confirm that the latch "CLICKS" into position properly |
| Swing Arms and Adapters | Confirm that all bolts and nuts are tight |
| All Hinge Points | Confirm that all hinge points are greased |
| Floor and Swing Arms | Confirm that the floors are flat and that the swing arms aren't cracked |
| Wire Cable | Confirm that the cable isn't stretched or rusty |
| Hydraulic Hose | Confirm that there are no oil leakage |
| Rollers and Shafts | Confirm that they have no cracks or other damage |
| Safety Lock Release | Confirm that the lock release disengages the safety latch |
| Hydraulic Pipes | Confirm the absence of cracks or leakage |
| All Welds | Confirm that there are no cracks |
| Hydraulic Oil | Confirm that oil is clean and that the level is proper |
| Safety Lock Control | Confirm that the control is operating properly |

Model 66000 Installation, Operation, and Maintenance

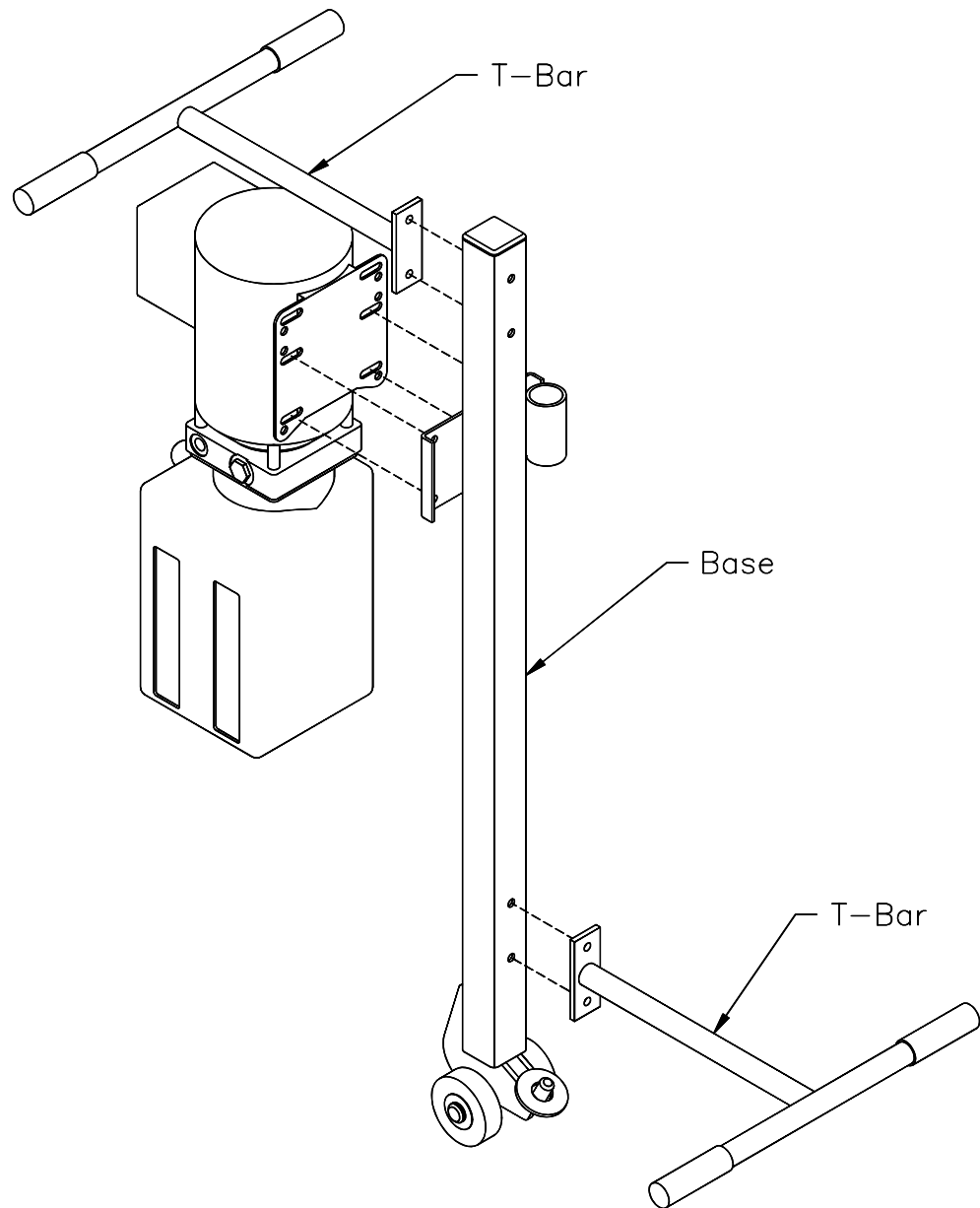


| Part No. | Part Description | Qty/set | Part No. | Part Description | Qty/set | Part No. | Part Description | Qty/set |
|----------|------------------|---------|----------|---------------------------|---------|----------|------------------------------------|---------|
| 6-12 | U-Nut | 2 | 7-13 | U-Nut | 2 | 9-3 | Adaptor | |
| 6-13 | Washer For Shaft | 4 | 7-16 | Spring | 1 | 9-4 | 90° Elbow | 4 |
| 6-15 | Plug | 2 | 7-17 | Latch Lever | 1 | 9-10 | Manifold | 2 |
| 6-16 | Square Head Plug | 2 | 7-18 | Washer for Shaft | 1 | 9-11 | Hex. Hole Bolt | 1 |
| 6-17 ◆ | O-Ring | 2 | 7-19 | Cable Adjustment | 1 | 9-12 | Spring Washer | 2 |
| 6-18 ◆ | O-Ring | 2 | 7-20 | Hex. Nut | 1 | 9-13 | Female Adaptor(NPT) | 2 |
| 6-19A | Oilless Bushing | 2 | 7-21 | Cable Lock Bolt | 1 | 9-15 | Lowering Adjustment Valve | 1 |
| 7-0 | Lock Assembly | 1 | 7-22 | Oilless Safety Wire Cable | 1 | 9-15A | Valve Body | 2 |
| 7-1 | Lock Pipe | 1 | 7-23 | Hex. Nut | 1 | 9-15B | Valve | 2 |
| 7-2 | Lock Leg | 1 | 7-24 | Spring Washer | 1 | 9-15C | Spring | 2 |
| 7-3 | Safety Latch | 1 | 7-25 | Hex. Hole Screw | 1 | 9-15D | Washer for Hole | 2 |
| 7-4 | Cam Shaft | 1 | 8-0 | Portable Dolly | 1 | 9-15E | Round Flat Washer | 2 |
| 7-5 | Link | 1 | 8-1 | Handle | 1 | 10-0 | Safety Lock Release Lever Assembly | |
| 7-9 | Spring Pin | 1 | 8-2 | Wheel | 2 | 10-1 | Handle | 1 |
| 7-10 | Spring Pin | 1 | 8-3 | Washer for Shaft | 2 | 10-2 | Lever | 1 |
| 7-11 | Hex. Bolt | 1 | 8-4 | Rubber Grip | 2 | 10-3 | Cross Hole Round Head Screw | 1 |
| 7-12 | Hex. Bolt | 1 | 9-1 | High Pressure Hose | 2 | | ◆REPAIR KITS (16pcs) | 1 |
| 7-13 | U-Nut | 2 | 9-2 | High Pressure Hose | 1 | | | |
| 7-16 | Spring | 1 | | | | | | |

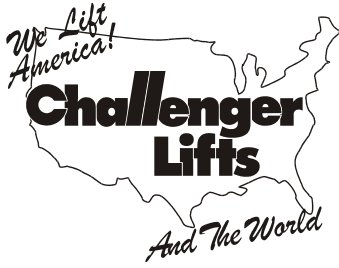
※ Specifications are to be changed subject without notice for improvements.

POWER UNIT STAND / TOW DOLLY ASSEMBLY INSTRUCTIONS

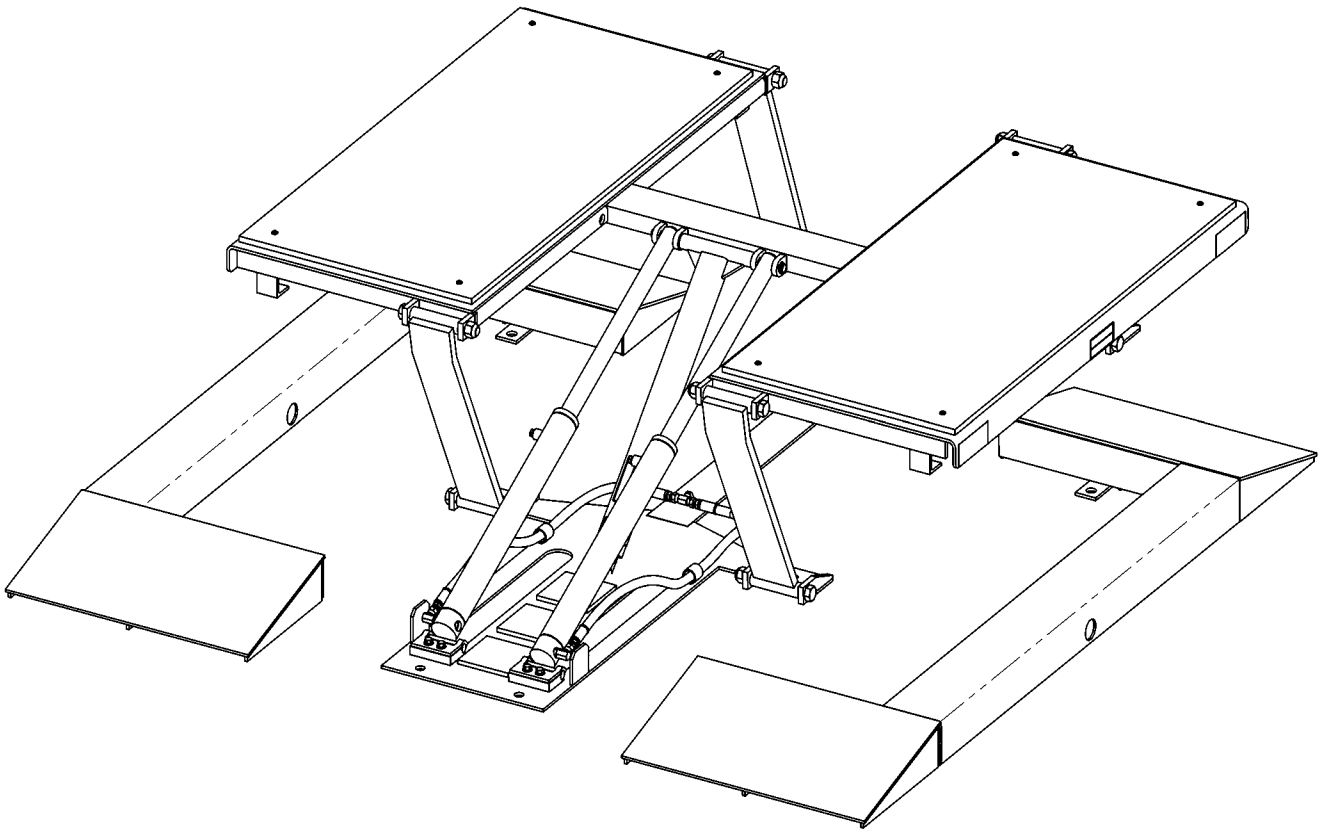
1. Assemble T-Bars to Base as shown with 5/16" x 3" long bolts, nuts, washers and lock washers.
2. Assemble Power unit to Power Unit Stand



INSTALLATION, OPERATION & MAINTENANCE MANUAL



Multi-Purpose Surface Mounted Lift



Model SR10

200 Cabel Street, P.O. Box 3944
email: sales@challengerlifts.com

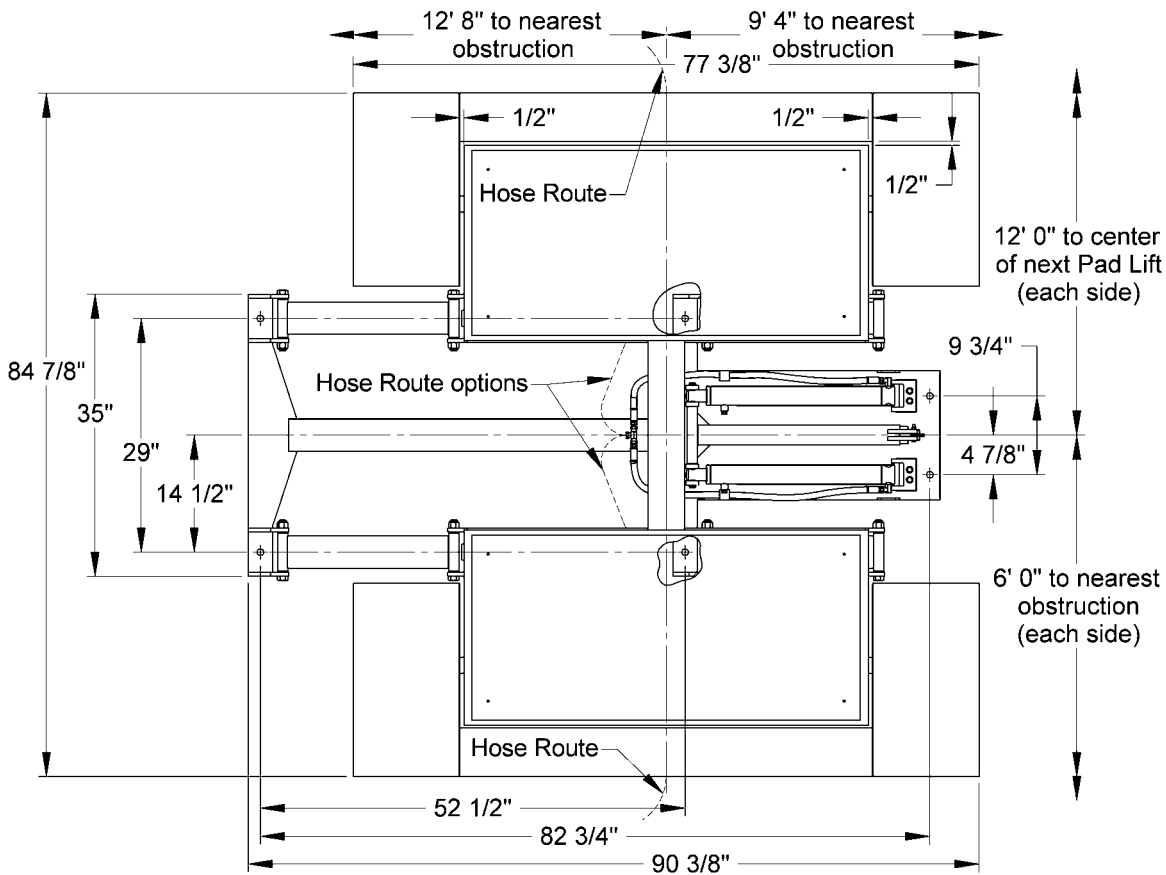
Louisville, Kentucky 40201-3944
web site: www.challengerlifts.com

Office: 800-648-5438 / 502-625-0700 Fax: 502-587-1933

**IMPORTANT: READ THIS MANUAL COMPLETELY BEFORE
INSTALLING or OPERATING LIFT**

General Specifications

| | |
|--------------------------|--------------------------------|
| Maximum Capacity | 10000 U.S. Pounds |
| Lowered Height | 4 ¼ inches |
| Raised Height | 22 inches |
| Locking Bar Height | 14 ¼", 18 ¾", 21 ½" |
| Overall Width | 84 7/8 inches |
| Overall Length | 90 3/8 inches |
| Rearward Movement | 13 1/2 inches |
| Motor | 1 Hp, 115 Volt, 1 phase, 60 Hz |



BEFORE YOU BEGIN

Safety Notices and Decals

For your safety, and the safety of others, read and understand all of the safety notices and decals included here.

Read entire manual before assembling, installing, operating, or servicing this equipment.

Proper maintenance and inspection is necessary for safe operation.



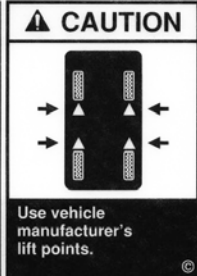




DO NOT operate a damaged lift.

Safety decals similar to those shown here are found on a property installed lift. Be sure that all safety decals have been correctly installed on the lift. Verify that all authorized operators know the location of these decals and fully understand their meaning. Replace worn, faded, or damaged decals promptly.

SAFETY WARNING LABELS FOR HINGED FRAME ENGAGING LIFTS

Lift Owner/User Responsibilities:

- A. This Safety Warning placard **SHALL** be displayed in a conspicuous location in the lift area.
- B. Use one of the mounting arrangements illustrated on back of this placard.
- C. These Safety Warning labels supplement other documents supplied with the lift.
- D. Be certain all lift operators read and understand these labels, operating instructions and other safety related information supplied with the lift.

| | | |
|---|---|---|
|  <p>CAUTION</p> <p>Lift to be used by trained operator only.</p> | <p>Power Unit: Secure placard near lift controls.</p>  <p>Lift Control Console: Secure placard in an accessible location.</p> | <p>The messages and pictographs shown are generic in nature and are meant to generally represent hazards common to all automotive lifts regardless of specific style.</p> <p>Funding for the development and validation of these labels was provided by the Automotive Lift Institute, PO Box 33116 Indian Creek, FL 32903.</p> <p>They are protected by copyright. Set of labels may be obtained from ALI or its member companies.</p> <p>© 1992 by ALI, Inc. ALI/WL300csm</p> |
|  <p>CAUTION</p> <p>Authorized personnel only in lift area.</p> |  <p>CAUTION</p> <p>Use vehicle manufacturer's lift points.</p> |  <p>CAUTION</p> <p>Always use safety stands when removing or installing heavy components.</p> |
|  <p>SAFETY INSTRUCTIONS</p> <p>Read operating and safety manuals before using lift.</p> |  <p>SAFETY INSTRUCTIONS</p> <p>Proper maintenance and inspection is necessary for safe operation.</p> |  <p>SAFETY INSTRUCTIONS</p> <p>Do not operate a damaged lift.</p> |

| | | |
|---|--|--|
|  <p>WARNING</p> <p>Position vehicle with center of gravity midway between adapters.</p> |  <p>WARNING</p> <p>Remain clear of lift when raising or lowering vehicle.</p> |  <p>WARNING</p> <p>Keep feet clear of lift while lowering.</p> |
|  <p>WARNING</p> <p>Clear area if vehicle is in danger of falling.</p> |  <p>WARNING</p> <p>Avoid excessive rocking of vehicle while on lift.</p> |  <p>WARNING</p> <p>Keep clear of pinch points when lift is moving.</p> |

WARNING Do not attempt to raise a vehicle on the lift until the lift has been correctly installed and adjusted as described in this manual.

Receiving

The shipment should be thoroughly inspected as soon as it is received. The signed bill of lading is acknowledgement by the carrier of receipt in good condition of shipment covered by our invoice.

If any of the goods called for on this bill of lading are shorted or damaged, do not accept them until the carrier makes a notation on the freight bill of the shorted or damaged goods. Do this for your own protection.

NOTIFY **Challenger Lifts** AT ONCE if any hidden loss or damage is discovered after receipt

IT IS DIFFICULT TO COLLECT FOR LOSS OR DAMAGE AFTER YOU HAVE GIVEN THE CARRIER A CLEAR RECEIPT.

File your claim with **Challenger Lifts** promptly. Support your claim with copies of the bill of lading, freight bill, and photographs, if available.

Flooring

Be certain you have the proper concrete floor to properly handle the loaded lift. Floor should be in generally good condition with no large cracks, spalling or deterioration. Minimum requirements for concrete are 4 inches minimum depth, with steel reinforcement, 3500 psi, cured for 28 days per local commercial practice. Floor should be level within 1/4 inch over the installation area. No anchors should be installed within 8 inches of any crack, edge, or expansion joint. If these conditions cannot be met, pads can be poured to accommodate the lift. Pad must be minimum of 8 ft x 8 ft x 1 ft minimum thickness, 3500 psi steel reinforced mechanically attached to existing floor.



Failure by purchaser to provide the recommended mounting surface could

result in unsatisfactory lift performance, property damage, or personal injury.

Vertical Clearance

Check the height of the area where the lift is to be installed. Clearance should be calculated based on the full raised height of the lift plus the height of the tallest vehicle you intend to service.



Failure by purchaser to provide adequate clearance could result in unsatisfactory

lift performance, property damage, or personal injury.

Electrical Requirements

For lift installation and operation, it is necessary to have a dedicated 115V single-phase 60-cycle circuit with a 25 amp circuit breaker or time delay fuse.

Tools Required for Installation

1. Concrete hammer drill.
2. 3/4 inch solid drill bit with carbide tip to ANSI Standard B94.12-1977.
3. Wrenches: 7/16, 1/2, 9/16, 15/16, 1 1/8 inch
4. Ratchet drive with the following sockets: 7/16, 1/2, 9/16, 1 1/8 inch
5. Hammer
6. Funnel
7. Torque wrench: 150 to 250 foot pounds
8. Adjustable wrenches: 8 and 12 inch

General Anchor Bolt Instructions

1. The anchor bolts must be installed at least 8 inches from any crack, edge, or expansion joint.
2. Use a concrete hammer drill with a 3/4-inch carbide tip. Tip diameter to ANSI Standard B94.12-1977 (.775 to .787).
3. Do not use excessively worn bits or bits which have been incorrectly sharpened.
4. Keep the drill in a perpendicular line while drilling.
5. Let the drill do the work. Do not apply excessive pressure.
6. Lift the drill up and down to remove dust and reduce binding.
7. Drill the hole through the floor or to a depth of 5 inches minimum. Drill completely through floor is possible.
8. Vacuum the dust from the hole. This increases the holding power of the anchor bolts.
9. Insert the assembled anchor bolt into the hole.
10. Tighten the bolt securely, and torque to 150 foot-pounds after installation is complete.

NOTE: Anchor boltholes are designed for a tight fit. Using the lift frame, as a template will slightly enlarge the holes, allowing for proper tolerances once the anchor bolt is installed.

Installation

1. Locate the pad lift on a level concrete floor with adequate space on all sides as shown in Fig. 1. Minimum floor thickness is 4". Minimum floor strength is 3500 psi.

WARNING **DO NOT** install on asphalt or other similar unstable surface.

NOTE:
The pad lift can be installed with the cylinder end pointing towards the front or rear of bay. **Be aware of pad lift clearances according to installation option chosen.**

NOTE:
At full rise, the lift will move the vehicle rearward 13 1/2" as shown in Fig. 2.

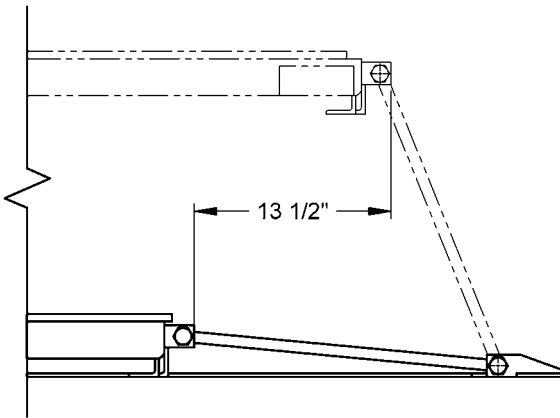


Fig. 2 Rearward Movement

2. Anchoring the lift, there are (6) 13/16" diameter holes provided in the base frame. The holes are sized for 3/4" anchor bolts. Use the holes as a template when drilling into floor.

NOTE:
The pad lift frame must not be twisted, bent or otherwise misaligned by uneven floors when anchoring. This will cause damage to the lift. Maximum out-of-level is 1/4" between all anchor points. If this is exceeded, it must be shimmed at that anchor point.

CAUTION If lift is to be used in a paint booth, the electrical power unit **MUST** be mounted outside the booth.

Power Unit

1. Locate the power unit stand using concrete anchors provided. Mount the power unit to the stand with 5/16" hardware provided. (The power unit may also be mounted on a wall with the motor at a minimum of 18" above the floor. Purchase the appropriate mounting hardware to match the wall construction.)
2. Connect the end of the hydraulic hose with the 90-degree elbow to the pressure port on the power unit. Tighten securely to prevent leaking.

NOTE: To avoid damage to the hose, never run the hose under the lift or in the path of the automobile tires.

3. Fill the reservoir with 6 quarts clean 10wt anti-foam, anti-rust hydraulic oil or Dexron III ATF. **DO NOT USE OILS WITH DETERGENTS.**
4. Place the open end of the hose into a clean bucket.
5. Plug power unit cord into a dedicated 115V single phase 60 cycle circuit with a 25 amp circuit breaker or time delay fuse
6. Cycle the power unit (2 seconds on, 2 seconds off) until the hose expels a steady stream of fluid.
7. Connect the hose to the port on the cylinder.
8. Actuate the power unit and raise the lift fully, then lower the lift to the floor. Repeat 3 to 4 times.
9. Drill the anchor holes and install the lift anchor bolts.

CAUTION The power unit operates at high pressure.

Raise and lower lift a few times and check hose and fittings for leaks and tighten if required.

Check for binding, misalignment or damage. Correct any unusual condition before raising vehicle.

Operation Procedure

The Owner/Employer shall insure that the lift operators are qualified and that they are trained in the safe use and operation of the lift using the manufacturer's operating instructions; ALI/SM 93-1, ALI Lifting It Right Safety Manual; ALI/ST-90 ALI Safety Tips Card; ANSI/ALI ALOIM-2000; American National Standard for Automotive Lifts-Safety Requirements for Operation, Inspection and Maintenance; ALI/WL Series, ALI Uniform Warning Label Decals/Placards; and in case of frame engaging lifts, ALI/LP-GUIDE, Vehicle Lifting Points/Quick Reference Guide for Frame Engaging Lifts.

The Owner/Employer shall establish procedures to periodically inspect the lift in accordance with the lift manufacturer's instructions or ANSI/ALOIM-2000, American National Standard for Automotive Lifts-Safety Requirements for Operation, Inspection and Maintenance; and the employer shall insure that the lift inspectors are qualified and they are adequately trained in the inspection of the lift.

The Owner/Employer shall establish procedures to periodically maintain the lift in accordance with the lift manufacturer's instructions or ANSI/ALOIM-2000, American National Standard for Automotive Lifts-Safety Requirements for Operation, Inspection and Maintenance; and the employer shall insure that the lift maintenance personnel are qualified and they are adequately trained in the inspection of the lift.

The Owner/Employer shall maintain the periodic inspection and maintenance records recommended by the lift manufacturer or ANSI/ALOIM-2000, American National Standard for Automotive Lifts-Safety Requirements for Operation, Inspection and Maintenance.

The Owner/Employer shall display the lift manufacturer's operating instructions; ALI/SM 93-1, ALI Lifting It Right Safety Manual; ALI/ST-90 ALI Safety Tips Card; ANSI/ALI ALOIM-2000; American National Standard for Automotive Lifts-Safety Requirements for Operation, Inspection and Maintenance; and in case of frame engaging lift, ALI/LP-GUIDE, Vehicle Lifting Points/Quick Reference Guide for Frame Engaging Lifts; in a conspicuous location in the lift area convenient to the operator.

OPERATING INSTRUCTIONS

NOTE:

After reviewing these instructions and all decals, get familiar with lift controls by running the lift through a few cycles before loading vehicle on lift.

Loading Vehicle

1. Be sure lift is fully lowered and service bay is clear of all personnel before the vehicle is driven on to lift.
2. Position vehicle over lift having equal distance from front tire to end of front ramps and rear tire to end of rear ramps. Vehicle must also be centered side to side.



WARNING Lift is designed to raise complete vehicle. **NEVER** use to raise just one end or Side of vehicle.

NOTE:

Some vehicles may have the manufacturer's recommended lift points identified by triangle shape marks located on its undercarriage. Also, there may be a label located on the right front door lock face showing specific vehicle lift points. If the vehicles lift points are not identified, refer to the service garage lift points shown in Fig. 4. **ALWAYS** follow the operating instructions supplied with the lift.

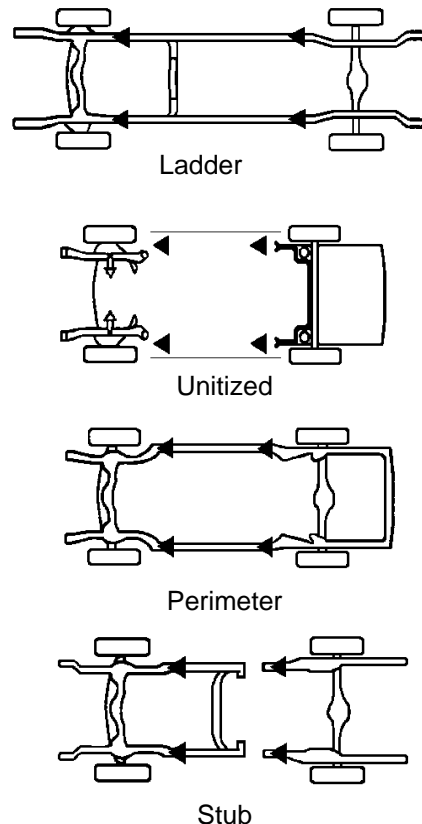


Fig 4 Service Garage Lift Points

CAUTION Most specialty or modified vehicles cannot be raised on a frame engaging or pad lift. Contact vehicle manufacturer for raising or jacking details.

3. Before lifting the vehicle be sure that:
 - A. Individual axle weight of vehicle does not exceed one-half lift capacity. See safety instructions (capacity).
 - B. Spacer pads are in secure contact with frame at vehicle manufacturer's recommended lift points.
 - C. Vehicle is stable on lift and neither front nor rear heavy.
 - D. Use optional 5" and 7" spacer pads if additional height between lift and vehicle is required to clear underbody parts as shown in Fig. 5.

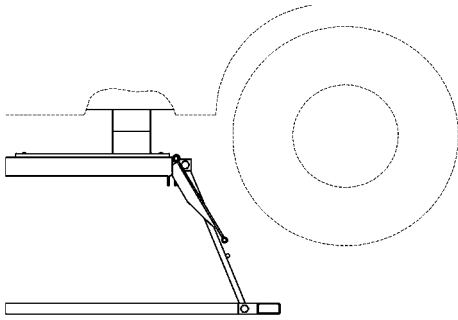


Fig 5 Optional Spacer Pads



CAUTION Always use minimum number of spacer pads to clear obstruction. Spacer pads should never be stacked more than (2) pads high in any combination.



CAUTION With some vehicles, the removal (or installation) of heavy components may cause a critical shift in balance and result in vehicle instability. Refer to the vehicle manufacturer's service manual for recommended procedures when performing these services.

Raising Vehicle

4. To raise lift:
 - A. Actuate **RAISE** switch on electric power unit.
 - B. Raise vehicle until tires clear floor.
 - C. Stop and check spacer pads for secure contact at manufacturer's recommended lift points.
 - D. Continue to raise to desired height **ONLY** if vehicle is secure on lift.

- E. If spacer pads are not in secure contact, lower vehicle and repeat steps A through D.
5. To lower lift:

Stand clear of lift and vehicle when lowering. Observe pinch point warning decals.

- A. Remove all tools or other objects from lift area.
- B. Raise vehicle approximately 1" to disengage lock.
- C. Push **LOWERING** valve handle to lower lift.



CAUTION Lowering handle must be held down to continue to lower lift. **DO NOT** override self-closing lift controls.

6. Before moving vehicle, remove any spacer pads and be sure lift is at the fully lowered position.

NOTE:

The lock bar will reset automatically when the lift is fully lowered or raised a minimum of 1". If during the lowering process the lift is stopped before it gets to the fully lowered position. The lock bar **MUST** be reset by raising the lift approximately 1".

MAINTENANCE

NOTE:

To avoid personal injury, permit only qualified personnel to perform maintenance on this lift.

See repair parts breakdown for replacement parts.

ALWAYS: Keep all bolts tight. Check periodically.

ALWAYS: Keep lift clean. Raise lift when cleaning floor area.

DAILY: Inspect spacer pads for damage or excessive wear.

DAILY: Check lock bar handle and release mechanism for damage or binding.

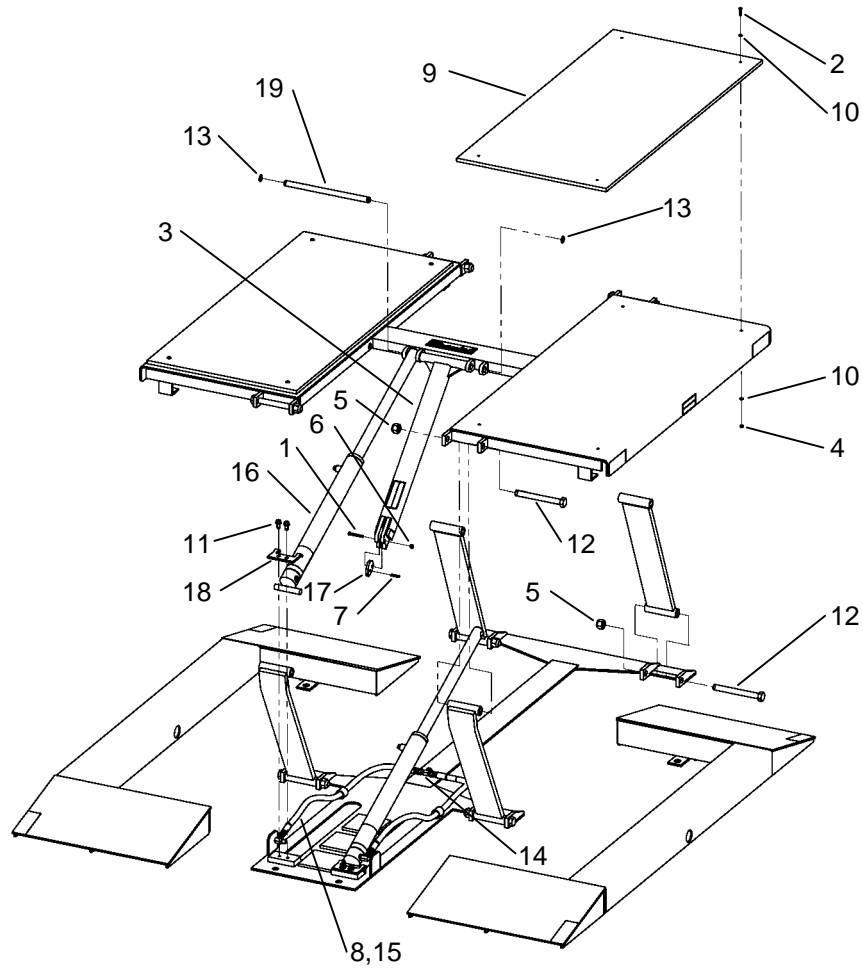
WEEKLY: Inspect all lift parts for signs of damage due to improper use.

MONTHLY: Lubricate lock bar pivot bolt and lock bar handle pivot points.

MONTHLY: Lubricate all hinge joints if there are signs of rusting.

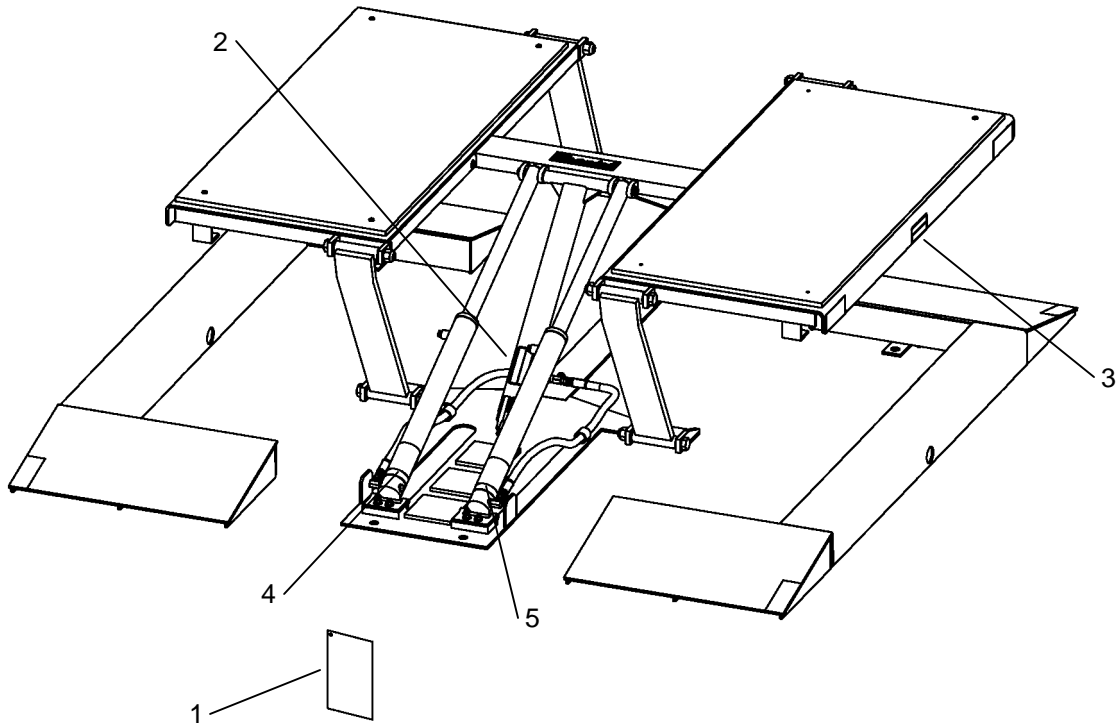
SEMI-ANNUALLY: Check fluid level of lift power unit and refill if required. Use only Dexron III ATF or 10wt anti-foam, anti-rust hydraulic oil. If fluid is required, inspect hose and connections and cylinder seals. Repair as required.

Model SR10 Installation, Operation & Maintenance



| ITEM | QTY | PART NO. | DESCRIPTION |
|------|-----|----------|--|
| 1 | 1 | 40070 | 1/4-20 X 1 3/4 Hex Head Cap Screw |
| 2 | 8 | 028-161 | #10-24 X 1 Pan Head Machine Screw |
| 3 | 1 | 03-0384 | Lock Bar Weldment |
| 4 | 8 | 055-127 | #10-24 Hex Nylock Nut |
| 5 | 8 | 31068 | 3/4-10 Hex Nylock Nut |
| 6 | 1 | 36059 | 1/4-20 Hex Nylock Nut |
| 7 | 1 | 16215 | 1/4 X 1-1/2 Spring Pin |
| 8 | 2 | 096-048 | Female Pipe Swivel Fitting |
| 9 | 2 | 10-0025 | Rubber Pad |
| 10 | 16 | 08520 | #10 SAE Washer |
| 11 | 4 | A1153 | 3/8-16 X 3/4 Hex Head Ser Flange Screw |
| 12 | 8 | 40308-SP | 3/4-10 X 7 Hex Head Cap Screw Gr 8 |
| 13 | 2 | 54-0045 | Retaining Ring |
| 14 | 1 | 60-0105 | 1/4 NPSM Female Tee Fitting |
| 15 | 2 | 62-0012 | 1/4 NPTF Male Hose (32") |
| 16 | 2 | 63-0022 | Lift Cylinder |
| 17 | 1 | 71-0273 | Lock Bar Cam |
| 18 | 2 | 73-0769 | Cylinder Retainer |
| 19 | 1 | 73-0934 | Pivot Pin (Main) |

Model SR10 Installation, Operation & Maintenance



CAUTION
Engage lock bar before working on raised vehicle.

80-0147

WARNING
Keep feet clear of lift while lowering

80-0148

CAUTION

- Before using this product, read and fully understand the operating instructions and all decals on the product. This is necessary to prevent injury to the operator and damage to the product.
- Do not attempt to use this lift for anything other than its intended purpose.
- If vehicle begins to tilt as it is raised, STOP! Lower the lift and reposition the vehicle.
- Do not use this lift if it is visibly worn, distorted or damaged.

80-0150

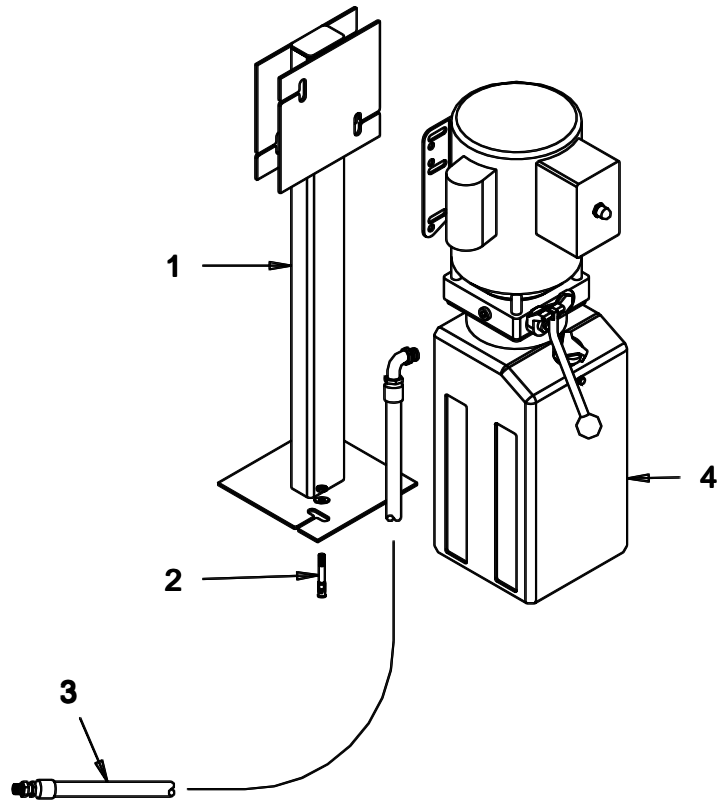
WARNING

- Position vehicle with center of gravity midway between lift pad spacers.
- This lift is designed to raise complete vehicle. NEVER use to raise just one end or side of vehicle.
- Remain clear of lift when raising or lowering vehicle.
- Avoid excessive rocking of vehicle while on lift.
- Keep feet and hands clear of pinch points when raising or lowering lift.

80-0151

| ITEM | QTY | PART NO. | DESCRIPTION |
|------|-----|----------|---------------------|
| 1 | 1 | 80-0145 | Instruction Placard |
| 2 | 1 | 80-0147 | Caution Decal |
| 3 | 2 | 80-0148 | Warning Decal |
| 4 | 1 | 80-0150 | Caution Decal |
| 5 | 1 | 80-0151 | Warning Decal |

Model SR10 Installation, Operation & Maintenance



| ITEM | QTY | PART NO. | DESCRIPTION |
|------|-----|-----------------|---------------------------------|
| 1 | 1 | 03-0196/03-0389 | Power Unit Stand / 7 Foot Stand |
| 2 | 1 | 26028 | Anchor Bolt, 3/8 x 3 3/4" lg |
| 3 | 2 | 62-0011 | Hydraulic Hose 20'lg |
| 4 | 1 | 67010 | AC., Power Unit 60Hz |