

**GOATS**

# 10-10 SUPER POWERMAN

This Parts List is for  
machines with  
Serial No. 10-10-153601 and up

ORDER PARTS FROM YOUR DISTRIBUTOR OR JOBBER

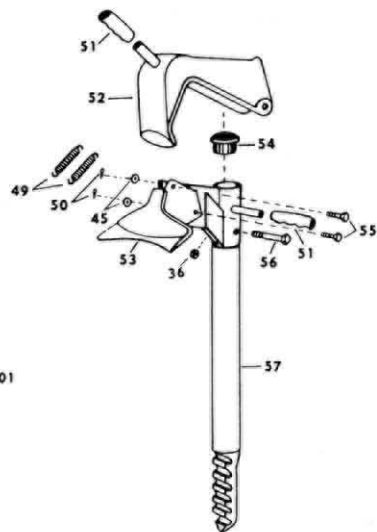
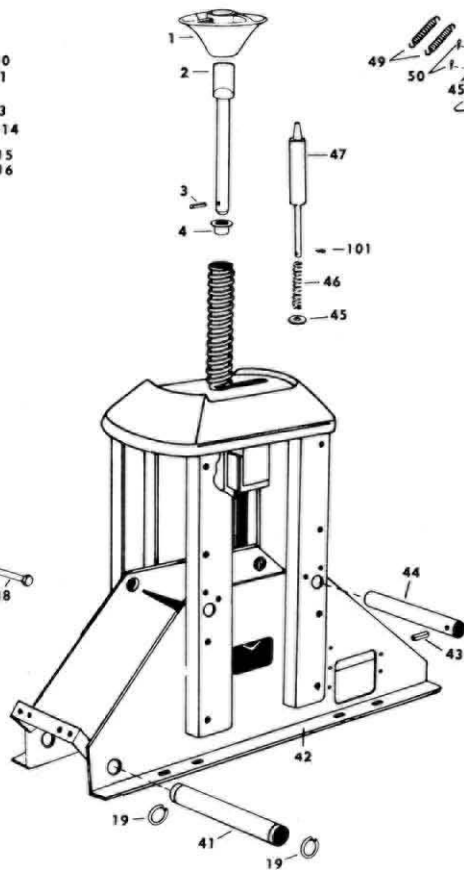
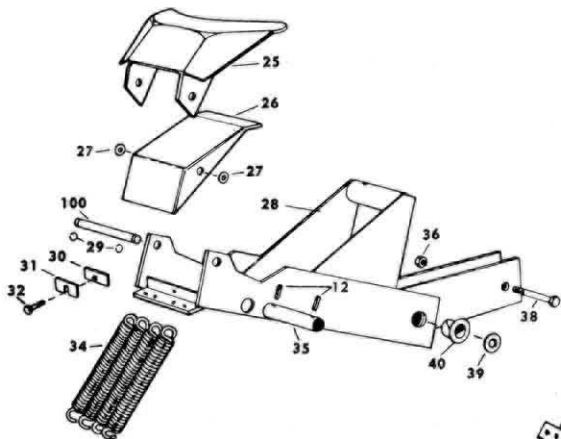
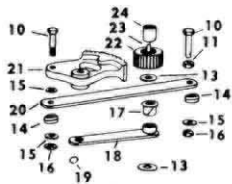
| Ref. No. | Part No. | Description                        | Ref. No. | Part No. | Description                       |
|----------|----------|------------------------------------|----------|----------|-----------------------------------|
| 1        | 000433   | Hold Down Con                      | 68       | 102376   | ½ x 3½" Cap Screw N.C.            |
| 2        | 101273   | Center Shaft                       | 67       | 100977   | Top Bead Breaker Arm              |
| 3        | 000304   | K. 1¼" Roll Pin                    | 58       | 104155   | Knob                              |
| 4        | 000510   | 1¼ x 1¼ Nylon Bearing              | 59       | 104176   | Detent Arm                        |
| 10       | 101296   | ¾" Drive Gear Bolt (Ea.)           | 60       | 104284   | Detent Spring                     |
| 11       | 100958   | Self Aligning Washer               | 61       | 103814   | ½ x 1½ Cap Screw W.F.             |
| 12       | 101181   | 3/16" x 1" Roll Pin                | 62       | 104354   | Stud Kit                          |
| 13       | 101156   | 1¼" Machine Bushing (Ea.)          | 63       | 104198   | ¾" x 6" Cap Screw N.F.            |
| 14       | 100960   | Self Aligning Bushing (Ea.)        | 64       | 104162   | Detent Tube                       |
| 15       | 101253   | ¾" Machine Bushing (Ea.)           | 65       | 104120   | Support Bracket                   |
| 16       | 100957   | ¾" Lock Nut (Ea.)                  | 66       | 101081   | 7" Cylinder                       |
| 17       | 101352   | T i Bar Nylon Bearing              | 67       | 000372   | ¼ x 90° Street Elbow              |
| 18       | 101298   | Gear Tie Bar                       | 68       | 101898   | ¾" Hose Fitting (Ea.)             |
| 19       | 100964   | 1¼" Snap Ring (Ea.)                | 69       | 101404   | Hose and Clamp Assy               |
| 20       | 101089   | Drive Gear Bar Assy                | 70       | 101411   | 1 Qt. Special Hydraulic Oil (Ea.) |
| 21       | 101087   | Drive Gear                         | 71       | 102452   | Center Panel R.H.                 |
| 22       | 100951   | Pinion                             | 72       | 102459   | ¾" Self Tapping Bolt (Ea.)        |
| 23       | 101091   | Shaft Key                          | 73       | 101112   | Rear Panel                        |
| 24       | 101369   | Lower Shaft Bearing                | 74       | 101110   | K. Self Tapping Screw (Ea.)       |
| 25       | 101042   | Large Lower Shoe                   | 75       | 000768   | Combination Tool                  |
| 26       | 101251   | Small Lower Shoe                   | 76       | 104366   | Front Panel Comp.                 |
| 27       | 100994   | Shoe Spacer                        | 77       | 106259   | Lube Bottle                       |
| 28       | 101036   | Power Arm                          | 78       | 000598   | 7/16" x ¾" Cap Screw N.C.         |
| 29       | 101001   | ¾" Snap Ring (Ea.)                 | 79       | 000534   | 7/16" Lock Washer                 |
| 30       | 105133   | Shoe Adjusting Bar                 | 80       | 000755   | 7/16" Square Nut                  |
| 31       | 101506   | Shoe Adjusting Shim Kit            | 81       | 000490   | Lube Bracket                      |
| 32       | 105131   | ¾" x 1¼" Self Tapping Screw        | 82       | 000491   | Lube Applicator                   |
| 34       | 100999   | Return Spring (Ea.)                | 84       | 000628   | 5/16" Lock Nut N.F. (Ea.)         |
| 35       | 101002   | Upper Cylinder Shaft               | 85       | 104163   | Foot Pedal                        |
| 36       | 101039   | ½" Lock Nut N. C. (Ea.)            | 86       | 104199   | 5/16" x ¾" Cap Screw N. F. (Ea.)  |
| 38       | 101040   | ½" x 3¼" Cap Screw N. C.           | 87       | 104147   | K. x 5" Cap Screw N. F.           |
| 39       | 101651   | Machine Bushing (Ea.)              | 88       | 102937   | ¾" Lock Nut N. F. (Ea.)           |
| 40       | 101351   | Axle Nylon Bearing (Ea.)           | 89       | 104108   | Foot Valve Plate                  |
| 41       | 101000   | Lower Cylinder Shaft               | 90       | 104148   | Flexible Inlet Assy.              |
| 42       | 104334   | Chassis                            | 91       | 103815   | ¾" x 1" Cap Screw N. F. (Ea.)     |
| 43       | 101371   | ¼" x 1¼" Roll Pin (Ea.)            | 92       | 103260   | ½" Lock Nut N. F. (Ea.)           |
| 44       | 100970   | Power Arm Axle                     | 93       | 104149   | Valve Spring (Ea.)                |
| 45       | 010027   | ½" Washer (Ea.)                    | 94       | 104154   | ½" x 4½" Clevis Pin (Ea.)         |
| 46       | 100952   | Positioning Pin Spring             | 95       | 104266   | Valve Complete                    |
| 47       | 101343   | Positioning Pin                    | 96       | 102469   | Poppet (Ea.)                      |
| 48       | 105678   | Plastic Breather Plug              | 97       | 102468   | Poppet Spring (Ea.)               |
| 49       | 101106   | Top Bead Breaker Shoe Spring (Ea.) | 98       | 104355   | Valve Cap (Ea.)                   |
| 50       | 102278   | ¾" x 1" Cotter Pin (Ea.)           | 100      | 101003   | Lower Shoe Shaft                  |
| 51       | 100979   | Top Bead Breaker Handle Grip (Ea.) | 101      | 102928   | 3/16" x 1" Cotter Pin             |
| 52       | 101163   | Top Bead Breaker Nose              | 102      | 104110   | Valve Bracket                     |
| 53       | 100988   | Top Bead Breaker Shoe Comp.        | 103      | 105668   | Center Panel L. H.                |
| 54       | 000437   | Cap Tube                           | 104      | 104209   | Muffler                           |
| 55       | 102276   | Clevis Pin                         | 105      | 108016   | Warning Decal                     |
|          |          |                                    | 106      | 108059   | Inflation Warning Decal           |

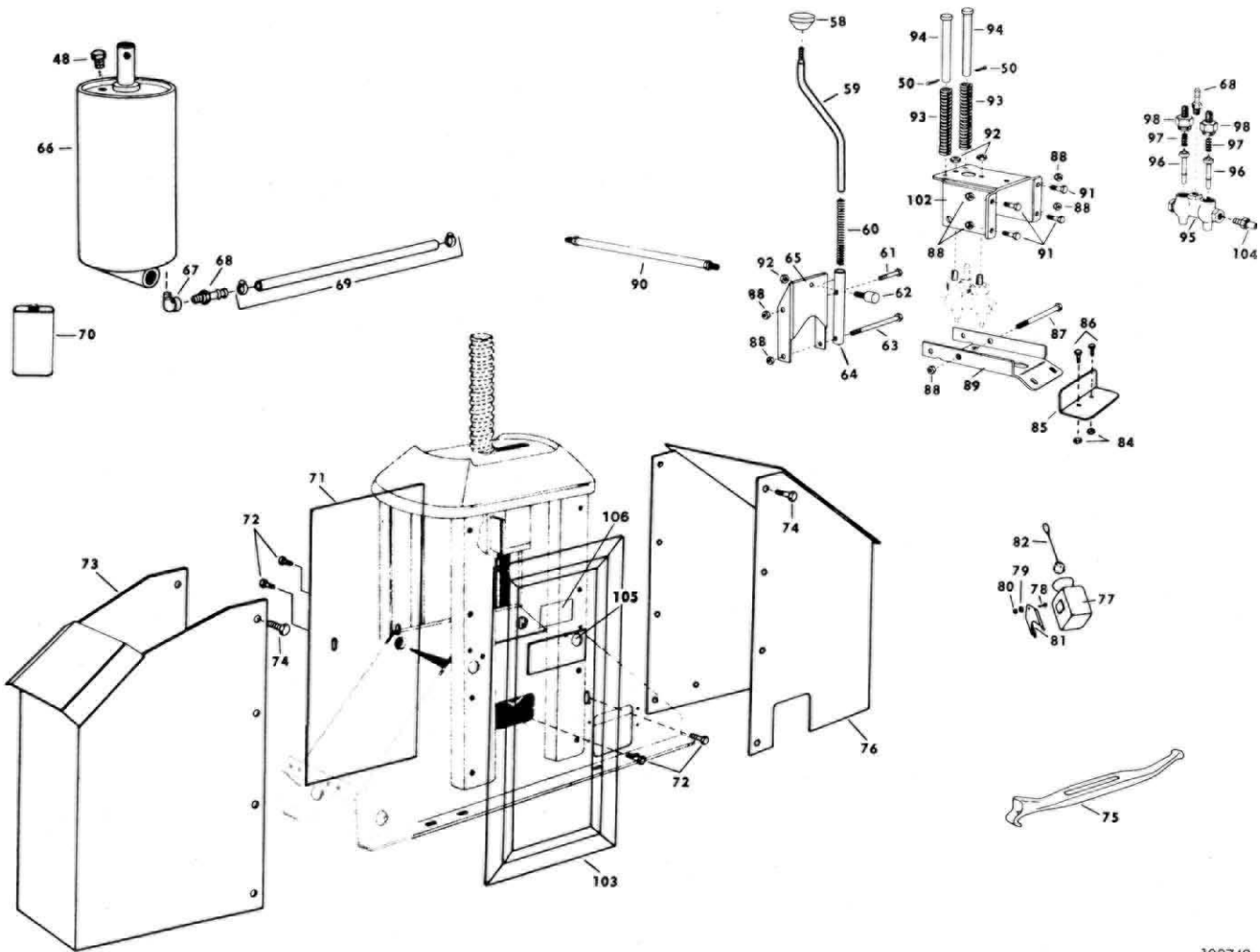
When ordering parts always give the following information:

(1) Part Number (2) Description (3) Serial Number of Your Machine

**COATS**

# 10-10 SUPER POWERMAN





# INSTALLATION INSTRUCTIONS AND LUBE DISPENSER INSTALLATION

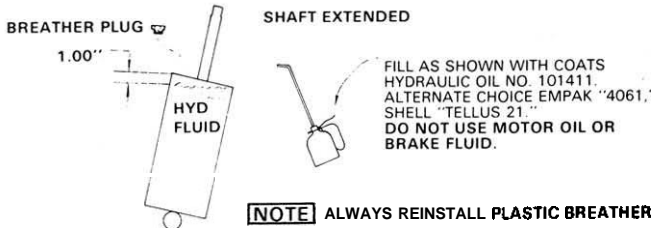
1. The Coati 10.10 Super Powerman can be bolted to the floor with sufficient anchors through the holes on each side of the base. Two diagonal anchors are sufficient.
2. The best operating air pressure is 150 psi at the machine. Do not exceed 175 psi at the machine. The 10.10 is furnished with a 1/4" NPT male fitting for easy connection. A 1/4" I. D. hose, or pipe, for connection to the machine is satisfactory. Sufficient air pressure will assure good performance.
3. For installing the Lube Dispenser, refer to the parts list on page 2. Remove the upper bead loosener assembly from the machine. Insert the cap screw, ref. no. 78, through the mounting hole of the lube bracket, ref. no. 81. Insert the cap screw through the hole of the front panel, ref. no. 76. Reach through the oblong hole on the front panel, and place 7/16" lock washer, ref. no. 79, on cap screw. Thread the 7/16 square nut, ref. no. 80, on cap screw hand tight. Place the lube bottle, ref. no. 77, on the lube bracket, ref. no. 81. Pivot the lube bottle and bracket to an approximate angle as shown on photo on page 1. Using a 3/4" wrench on the nut and a 5/8" wrench on the bolt, secure the nut. Replace the upper bead loosener assembly.

## MAINTENANCE

1. The moving parts of the Coats 10.10 Super Powerman are self-lubricating through the use of powdered metal or nylon bearings for a lifetime of performance.
2. Lower bead breaker shoe adjustment:
  - A. Remove side panels, ref. no. 71 and 103.
  - B. Remove end panels adjacent shoe, ref. no. 73.
  - C. Loosen 3/8 x 1/4 self-tapping bolt, ref. no. 32.
  - D. Add or remove shims to bring shoe into adjustment. Small lower shoe, ref. no. 26, should clear a 13", 14 or 15" rim by 1/16" to 1/8".
  - E. Replace end and side panels.

## CYLINDER MAINTENANCE

It is important that the cylinder be filled to the proper level at all times. If the oil becomes low, the machine will surge at the beginning of its stroke. A special hydraulic oil must be used. To fill, remove the (2) center panels by removing (4) 3/8" self tapping bolts. Remove the rear panel by removing (8) 3/8" self tapping screws. Disconnect (4) return springs. Depress foot pedal and run cylinder to the top of its stroke. Remove plastic breather plug. Fill cylinder to within 1" from the top of access hole. REPLACE PLASTIC BREATHER PLUG. Push downward on power arm to retract cylinder. Replace springs, rear panel, and center panels.



## TROUBLE SHOOTING

### LOSS OF POWER

If machine appears to have a loss of power, the following items should be checked:

- 1) Low input air pressure to machine.
- 2) Clogged inlet line or valve.
- 3) Pinched or kinked hose.
- 4) Excessive air leaks.
- 5) Foot pedal may be bent and doesn't actuate valve fully.
- 6) Dirty Alter — Alter is located in the street ell on the bottom ell the surge tank.
- 7) Breather plug vent in the top of the power cylinder may be clogged.
- 8) Debris in the cylinder oil — due to leaving plastic plug out of cylinder top.

### MACHINE FAILS TO RETURN

If bead looseners and center shaft fail to return, the following items should be checked:

- 1) Foot Valve poppet stuck.
- 2) Pinched or kinked hose.
- 3) Breather plug vent clogged.
- 4) Broken return springs.
- 5) Unlubricated drive gears (under table top).