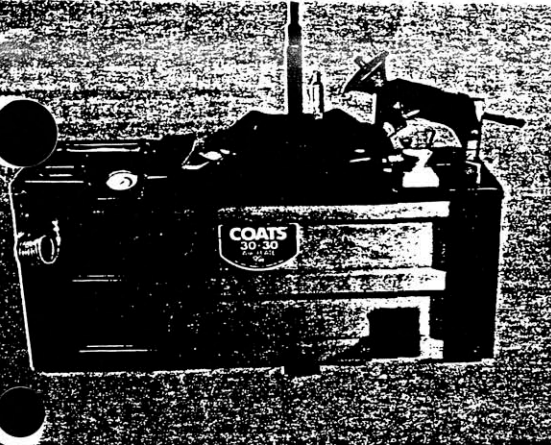


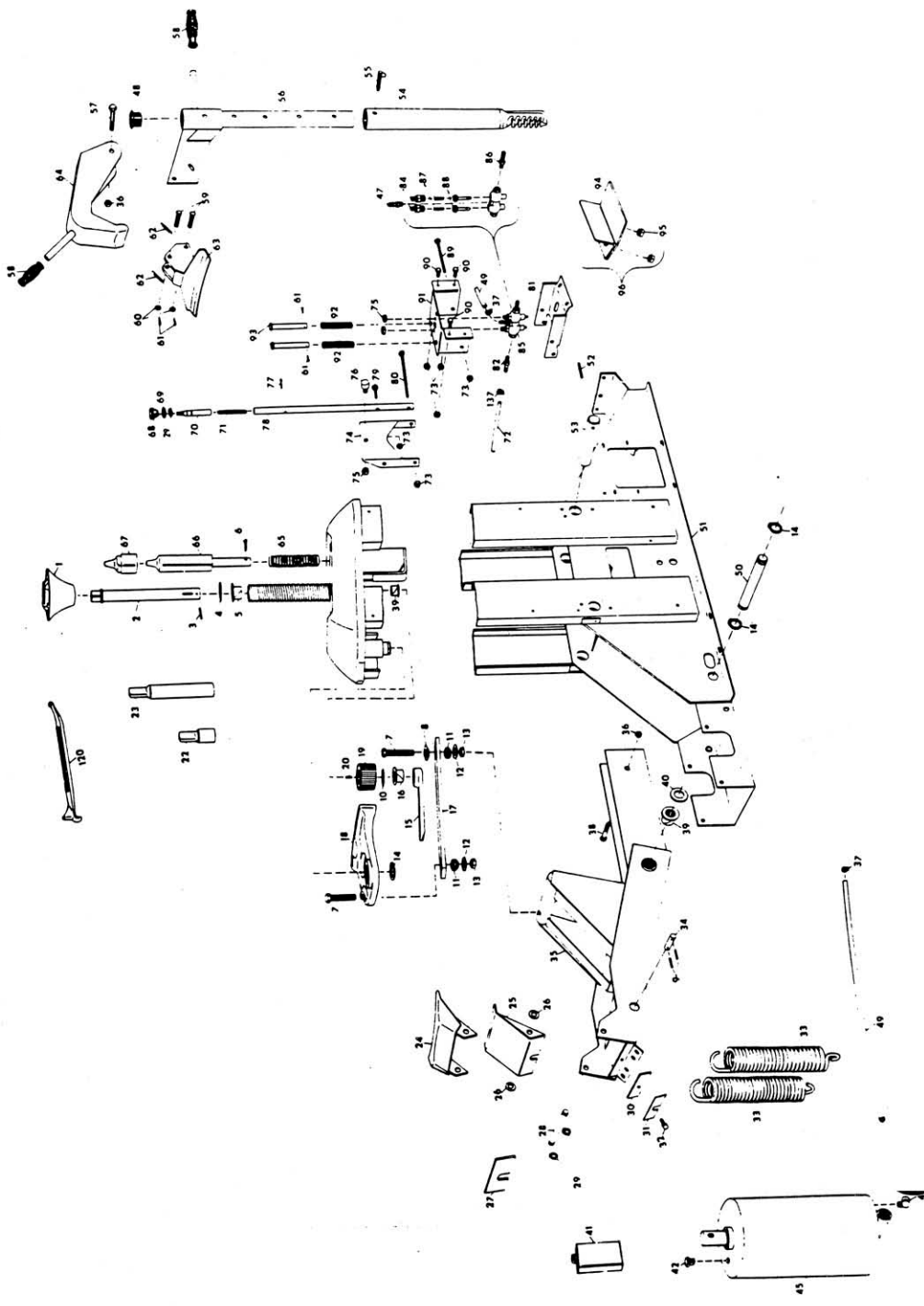
COATS 30-30A AIR-FLATE

This Parts List is for
units with
Serial No. 30-30A-00,001 and up

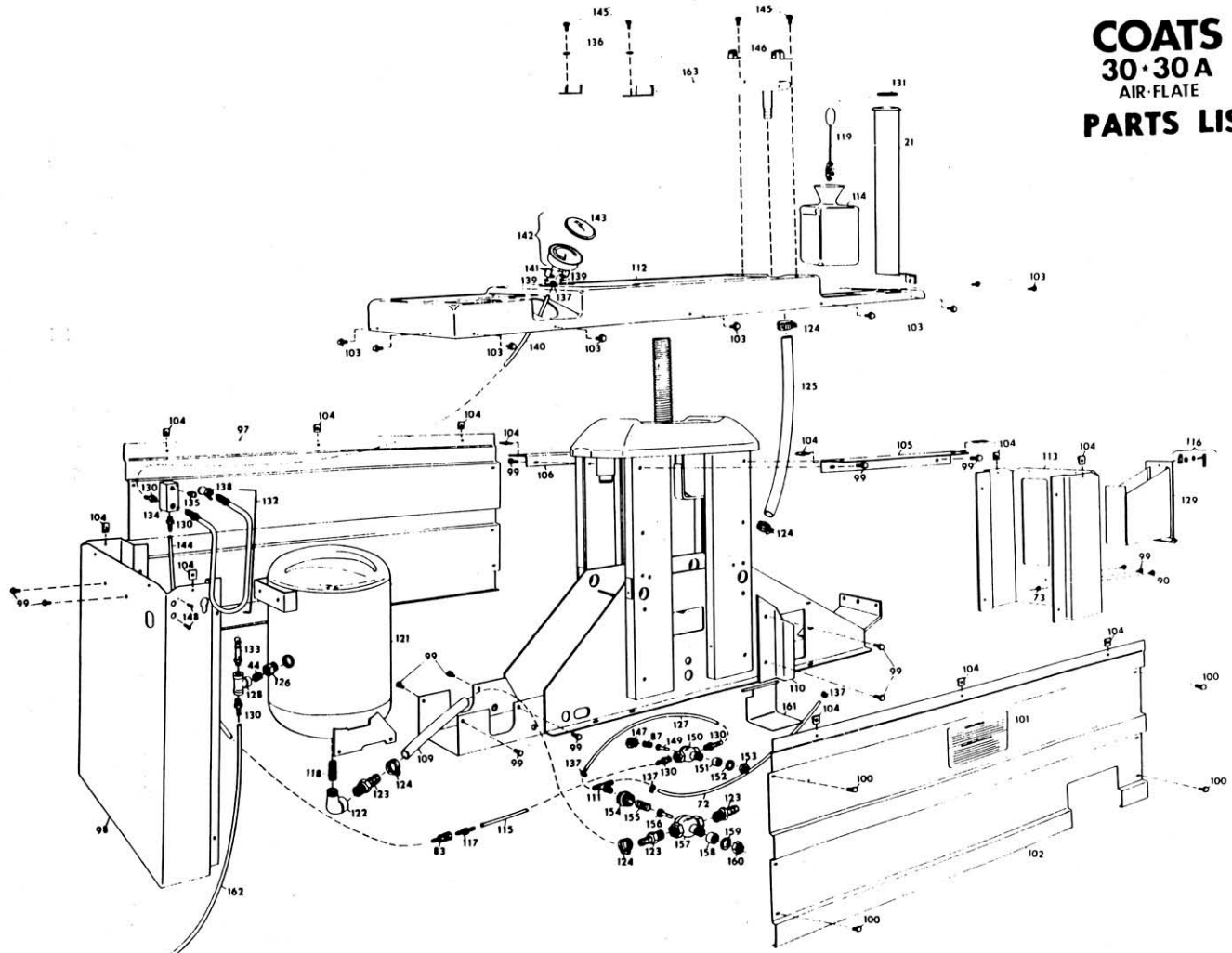


ORDER PARTS FROM YOUR DEALER OR DIRECT FROM COATS

Ref. No.	Part No.	Description	Ref. No.	Part No.	Description	Ref. No.	Part No.	Description
1	000433	Hold Down Cone	56	104024	Adjustable Upper Bead Loosener Arm	109	106282	3/4" Hose 26"
2	104250	Center Shaft Assembly				110	106246	Support Front Side Panel
3	000304	3/8" x 1 1/4" Roll Pin	57	102376	1/2" x 3 1/2" Cap Screw N.C.	111	106278	Male Branch Tee
4	104253	Machine Bushing	58	100979	Top Bead Loosener Handle Grip (Ea.)	112	106235	Formed Steel Cover
5	000510	1 1/4" x 1 1/2" Nylon Bearing				113	106248	End Panel Right
6	105810	1/2" x 2" Cotter Pin	59	102278	Clevis Pin	114	106272	Bezzle - Lubr
7	101296	3/4" Drive Gear Bolt (Ea.)	60	010027	1/2" Washer (Ea.)	115	106285	1/4" Hose 18"
8	100958	Self Aligning Washer	61	102278	1/8" x 1" Cotter Pin (Ea.)	116	106276	Handle Assembly Accessory Tool Box
9	101181	3/16" x 1" Roll Pin (Ea.)	62	101106	Top Bead Loosener Shoe Spring	117	106319	Quick Coupler Male
10	101156	1 1/4" Machine Bushing (Ea.)	63	100988	Top Bead Loosener Shoe Complete	118	106188	Swivel Screen
11	100960	Self Aligning Bushing (Ea.)	64	101163	Top Bead Loosener Nose	119	000491	Lub Applicator
12	101253	3/4" Machine Bushing (Ea.)	65	103671	Positioning Pin Spring	120	000768	Combination Tool
13	100957	3/4" Lock Nut N.C. (Ea.)	66	103265	Positioning Pin	121	106241	Surge Tank
14	100964	1 1/4" Snap Ring (Ea.)	67	104319	Positioning Pin Extension	122	000572	3/4" x 90" Street Ell
15	101298	Gear Tie Bar	68	104153	Knob	123	103783	1/2" Straight Fitting (Ea.)
16	101352	Tie Bar Nylon Bearing	69	103265	3/4" x 1 1/4" Machine Bushing	124	101346	Hose Clamp (Ea.)
17	101089	Drive Gear Bar Assembly	70	104262	Push Handle	125	106283	3/4" Hose 25 3/8"
18	104247	Drive Gear Complete	71	104284	Detent Spring	126	101312	Reducing Bushing (3/4" - 1/2")
19	100951	Pinion	72	106286	1/4" Hose 16"	127	106284	3/4" Hose 13 1/4"
20	101091	Shaft Key	73	102937	3/8" Lock Nut N.F. (Ea.)	128	000643	1/4" Tee
21	106234	Storage Tube	74	104130	Support Bracket	129	106261	Accessory Tool Box Weld Complete
22	104246	Center Post Adapter	75	103260	1/2" Lock Nut N.F. (Ea.)	130	102390	3/4" Hose Fitting (Ea.)
23	104245	Center Post Extension	76	104354	Stud Kit	131	106293	Rubber Bumper Combo Tool Tube
24	101042	Large Lower Shoe	77	103006	5/32" x 1 1/4" Cotter Pin	132	106871	Inflation Hose Assembly
25	101251	Small Lower Shoe	78	106230	Air Detent	133	103783	1/2" Straight Fitting (Ea.)
26	100994	Shoe Spacer (Ea.)	79	103814	3/8" x 1 1/2" Cap Screw N.F.	134	106270	Inflation Manifold
27	102927	1/2" Shim	80	104198	3/8" x 6" Cap Screw N.F.	135	103737	Release Valve
28	101003	Lower Shoe Shaft	81	104108	Foot Valve Plate	136	000745	1/4" Flat Washer
29	101001	3/4" Snap Ring (Ea.)	82	000378	1/4" Straight Fitting	137	101428	Hose Clamp
30	105133	1/4" Shoe Adjusting Bar	83	106320	Quick Coupler Female	138	103783	1/2" Tee
31	101506	Shoe Adjusting Shim Kit	84	104147	Valve Cap (Ea.)	139	101312	Air Gauge Mfg Nut (Ea.)
32	105131	3/8" x 1 1/4" Self Tapping Bolt	85	104266	Valve Complete	140	106288	1/4" Hose 16 1/4"
33	104012	Return Spring (Ea.)	86	104209	Muffler	141	104137	Air Gauge Mounting Bracket (Ea.)
34	101002	Upper Cylinder Shaft	87	102468	Poppet Spring (Ea.)	142	103736	Air Gauge
35	104235	Power Arm	88	106320	Poppet (Ea.)	143	105266	Lens on Ring Assembly
36	101039	1/2" Lock Nut N.C. (Ea.)	89	104147	3/8" x 5" Cap Screw N.F.	144	106284	1/4" Hose 22 1/2"
37	101427	Hose Clamp	90	103815	3/8" x 1" Cap Screw N.F.	145	104945	1/4" x 3/4" Self Tapping Bolt (Ea.)
38	101040	1/2" x 3/4" Cap Screw N.C.	91	104110	Valve Bracket	146	104564	Ring Fastener (Ea.)
39	101351	Nylon Bearing (Ea.)	92	104149	Valve Spring	147	105671	End Cap (1/2" Valve)
40	101651	Machine Bushing (Ea.)	93	104154	5/8" x 4 1/2" Clevis Pin (Ea.)	148	104596	10-32 Self Tapping Screw
41	104111	1 Qt. Special Hydraulic Oil (Ea.)	94	106035	Foot Pedal	149	104649	Poppet (1/2" Valve)
42	105678	Plastic Breather Plug	95	000525	3/16" Lock Nut N.C. (Ea.)	150	104600	1/4" Valve Complete
43	104025	Adjustable Upper Bead Loosener Assembly Complete	96	106190	Foot Pedal Kit	151	104673	Bushing 1/2" Valve
44	000580	1/4" Close Nipple	97	106348	Side Panel Rear Comp.	152	104613	5/8" External Lock Washer
45	101081	7/8" Cylinder	98	106247	End Panel Left	153	104611	5/8" Jam Nut N.F.
46	000372	1/2" x 90" Street Elbow	99	102439	3/8" Self Tapping Screw (Ea.)	154	106350	End Cap (3/4" Valve)
47	101898	3/8" Hose Fitting	100	106300	3/8" Hex Washer Self Tap-Black Bolt (Ea.)	155	104651	Spring (3/4" Valve)
48	105824	Cap Plug	101	105387	Warning Decal	156	104652	Poppet (3/4" Valve)
49	102785	3/8" Hose 28"	102	106349	Side Panel Front Comp.	157	106298	3/4" Valve Perfed 1/4-18 N.P.T.
50	101000	Lower Cylinder Shaft	103	106301	1/2" Hex Whiz Lock Self Tap Screw (Ea.)	158	104674	Bushing 3/4" Valve
51	106273	Chassis Weld Assembly	104	106304	3/8" Lock Washer	159	104612	3/8" Lock Washer
52	101371	1/2" x 1 1/2" Roll Pin	104	106304	Skin Fastener Tinmeron (Ea.)	160	104610	3/4" Jam Nut N.F.
53	100970	Power Arm Axle	105	106291	Angle Top Support Operator Side	161	106308	Air - Flate Podal
54	104026	Extension Tube	106	106292	Angle Top Support Opposite Operator Side	162	106281	1/4" Hose 20"
55	104267	Clevis Pin				163	106237	Air Tube



COATS 30-30A AIR-FLATE PARTS LIST



AIR

INSTALLATION INSTRUCTIONS AND LUBE DISPENSER INSTALLATION

1. The Coats 30.30A Air-Flate can be bolted to the floor with suitable anchors through the slotted holes on each side of the base. Two diagonal anchors are sufficient.
2. The best operating pressure range is 150-175 psi at the machine. Do not exceed 175 psi at the machine. The 30.30A is furnished with a 1/4" pipe thread male fitting for easy connection. This connection is located on the lower left hand corner of the operators side. A 1/4" I.D. hose, or pipe, for connection to the machine is satisfactory. Sufficient air pressure will assure good performance.
3. Procedure for removing the lube dispenser bottle.
 - A. With hand through bead breaker opening, press retaining lip on the lube bottle.
 - B. With retaining lip depressed, pull lube bottle straight up.

MAINTENANCE

1. The moving parts of the Coats 30.30A Air-Flate are self-lubricating, through the use of powdered metal or nylon bearings, for a lifetime of performance.
2. Lower bead breaker shoe adjustment:
 - A. Clamp a 13, 14, or 15-inch rim without a tire on the table.
 - B. Cycle machine and note the clearance between the rim flange and the small lower shoe, ref. no. 25. The proper shoe clearance is from 1/16" to 1/8". If clearance is not within these specs, the shoe must be adjusted.
 - C. To adjust shoe, loosen 3/8" x 1-1/4" self-tapping bolt, ref. no. 32, and add or remove shims to bring shoe into adjustment.
 - D. Tighten bolt and check adjustment as described in steps A and B.
3. Air gauge recalibration instructions:
 - A. Pry lens and ring assembly off gauge.
 - B. Loosen two phillips head screws located on edge of dial face in the 10 o'clock and 2 o'clock positions. Caution: do not loosen over three turns.
 - C. Pressurize gauge with 32 psi measured from a standard gauge.
 - D. Rotate top dial until 32 psi graduation is in line with the pointer.
 - E. Tighten the two phillips screws—check alignment of pointer with graduation.
 - F. Replace lens and ring by pressing evenly around ring.

CYLINDER MAINTENANCE

The unique design of the hydraulically damped air cylinder, ref. no. 45, allows smooth, controlled bead loosening, mounting, and demounting. Internal sealing surfaces are chrome plated to provide long seal life. A small amount of oil is usually lost after a period of time in lubricating the seals. It is important that the cylinder be filled to the proper level at all times. If the oil becomes low, the machine will surge at the beginning of its stroke. Cylinder oil level should be checked before initial operation. A special hydraulic oil, ref. no. 41, must be used. To fill, remove ref. no. 102, front panel, by removing (4) ref. no. 100, 3/8" self-tapping bolts, (3) ref. no. 103, 1/4" self-tapping bolts. Depress and hold foot pedal to run the cylinder to the top of its stroke. Remove plastic plug, ref. no. 42. Fill cylinder to within 1" to 1-3/16" from access hole in the top. Be careful that no dirt falls in through the access hole. Replace the plastic breather plug and replace the front panel.