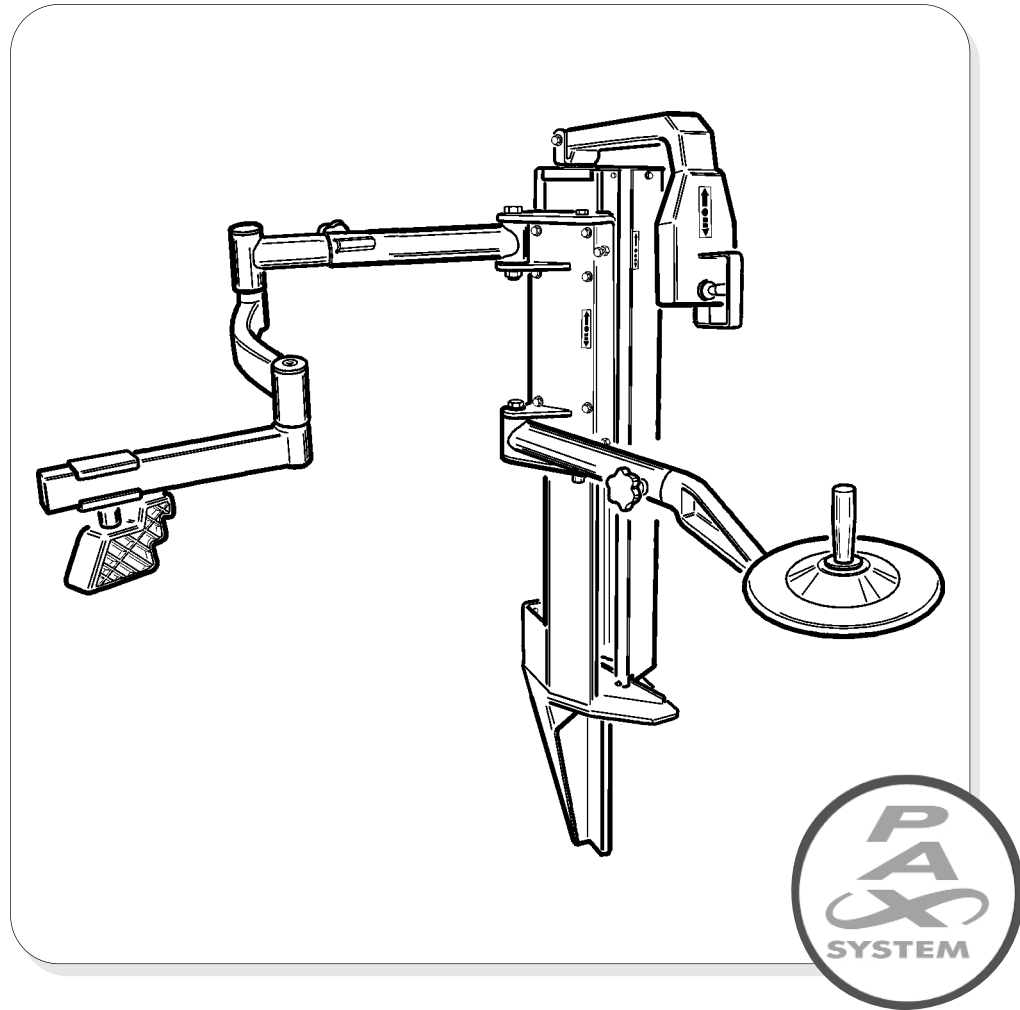


COATS PAX SYSTEM 9024 E-PAX & 9024E PAX Adapter



Parts Identification

READ these instructions before placing unit in service. KEEP these and other materials delivered with the unit in a binder near the machine for ease of reference by supervisors and operators.

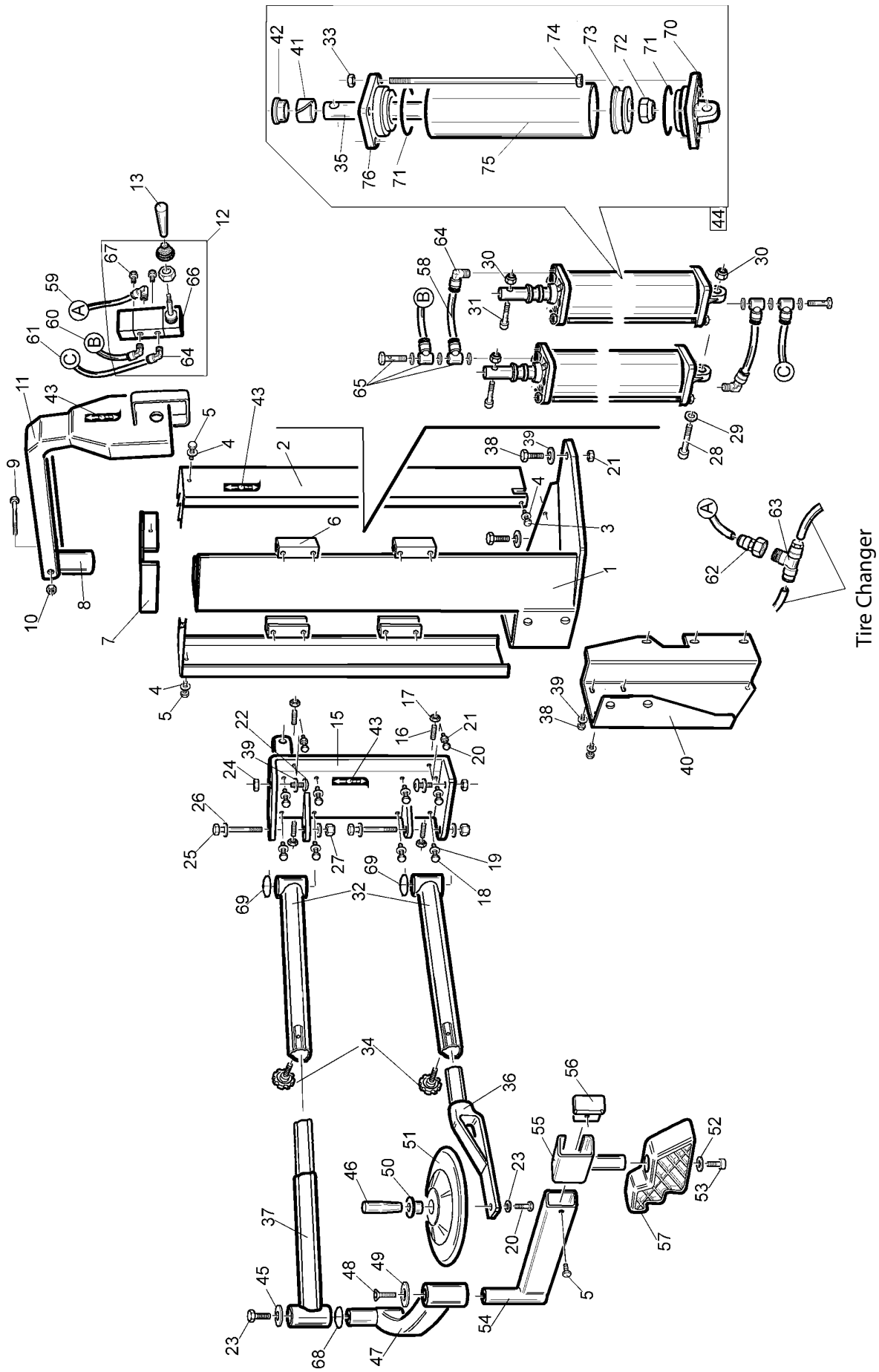
HENNESSY INDUSTRIES, INC.

1601 J. P. Hennessy Drive, LaVergne, TN USA 37086-3565 615/641-7533 800/688-6359

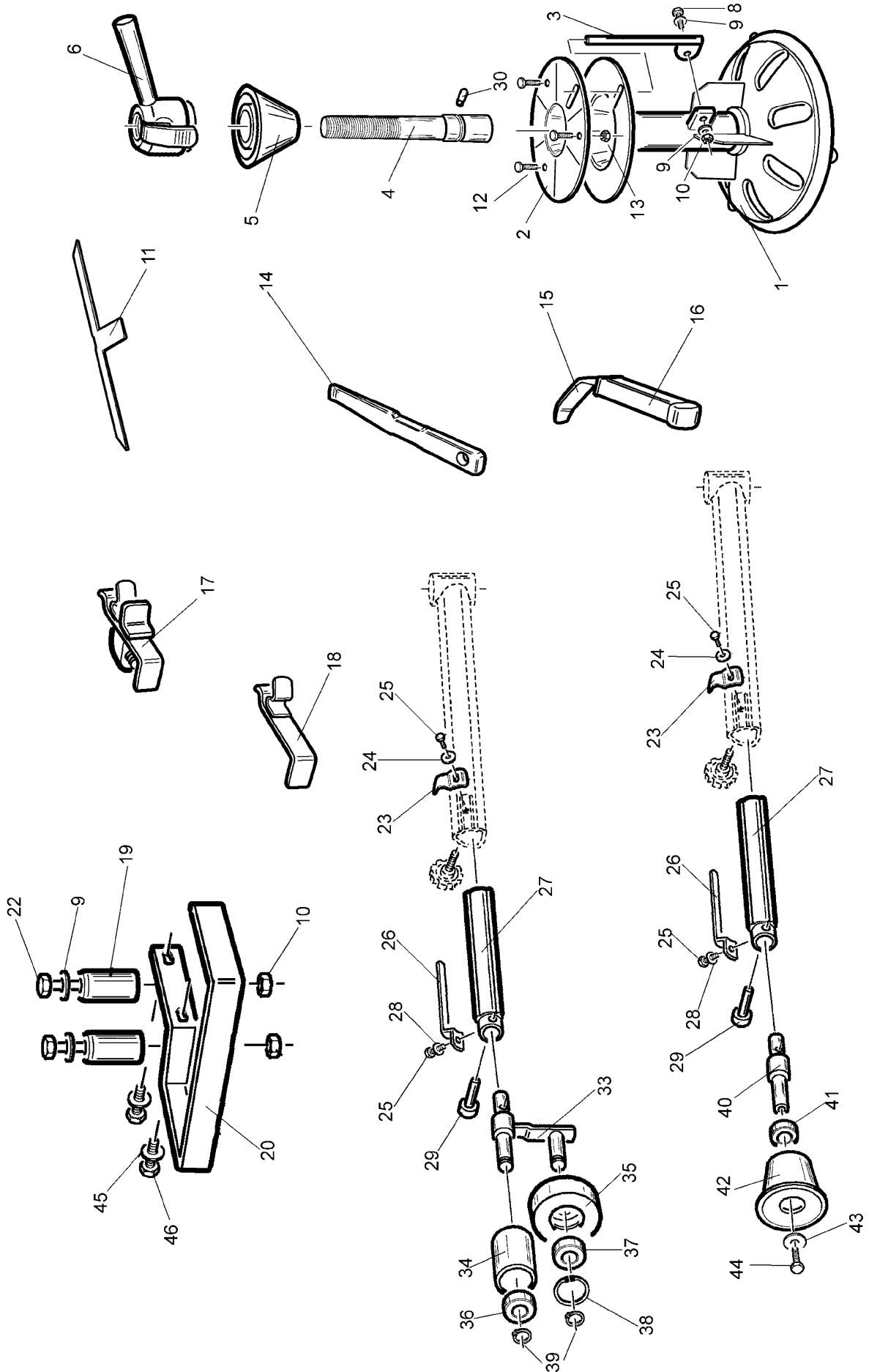
HENNESSY INDUSTRIES INC. Manufacturer of AMMCO®, COATS® and BADA® Automotive Service Equipment and Tools.

Manual Part No.: 8184627 00

Revision: 11/04



| ITEM | PART NO. | DESCRIPTION | ITEM | PART NO. | DESCRIPTION | ITEM | PART NO. | DESCRIPTION |
|------|-----------|------------------------|------|-----------|-------------------------|------|-----------|-----------------------|
| 1 | 872113590 | Complete Column | 31 | 874399955 | Screw 12x40 | 61 | 873012445 | Hose 6x4 L=1800 |
| 2 | 876613569 | Column Side Cover | 32 | 876613560 | Arm 1 | 62 | 874198172 | Union 1/8" |
| 3 | 874399892 | Screw 6x20 | 33 | 874397678 | Flanged Nut M8 | 63 | 874198778 | Quick Union 1/8" |
| 4 | 874399998 | Washer 6 (6,4x12x1,6) | 34 | 874296113 | Knob D.50 M12x25 | 64 | 874198618 | Union 1/8" |
| 5 | 874398723 | Screw 6x12 | 35 | 873012715 | Cylinder Rod L=473 | 65 | 872499669 | Double Union 1/8"-6 |
| 6 | 873012774 | Slide | 36 | 872113596 | Bead Breaking Disk Arm | 66 | 874198285 | 5-Way Valve |
| 7 | 872113566 | Column Upper Cover | 37 | 876613593 | Arm Extension | 67 | 874199610 | Silencer 1/8" |
| 8 | 872113627 | Arm Pivot Pin | 38 | 874399228 | Screw 10x25 | 68 | 874297666 | O-ring D.34, 60x2, 62 |
| 9 | 874397786 | Screw 8x70 | 39 | 874399378 | Washer D.10 (10x5x21x2) | 69 | 874296482 | O-ring D.15, 88x2, 62 |
| 10 | 874399900 | Self-Locking Nut M8 | 40 | 876613405 | Support | 70 | 873002293 | Flange |
| 11 | 876613601 | Arm | 41 | 874298823 | Nylon Guide | 71 | 874298822 | O-ring D.68, 26x3, 53 |
| 12 | 872006996 | Valve | 42 | 873199601 | Scraper | 72 | 874399865 | Self-Locking Nut M12 |
| 13 | 873010284 | Knob D.14x45 M5 | 43 | 873008944 | Decal | 73 | 874198856 | Piston D.75 |
| 14 | 874399946 | Screw 8x16 | 44 | 872012714 | Cylinder Unit | 74 | 873008860 | Bolt M8x1, 25x431 |
| 15 | 876613570 | Carriage | 45 | 873002311 | Washer D.10x45x4 | 75 | 873008858 | Cylinder Liner L=402 |
| 16 | 874398214 | Screw 8x16 | 46 | 872012683 | Handle+Screw | 76 | 873002294 | Flange |
| 17 | 874399976 | Nut M8 | 47 | 876613004 | Arm | | | |
| 18 | 874399829 | Washer 8 (8,4x16x1,5) | 48 | 874399120 | Screw 10x20 | | | |
| 19 | 874396365 | Screw M8x14 8.8 | 49 | 873009088 | Washer D.10x45x4 | | | |
| 20 | 874399786 | Screw 10x30 | 50 | 873006862 | Disk Pin | | | |
| 21 | 874399969 | Nut M10 | 51 | 873006886 | Bead Breaking Disk | | | |
| 22 | 874396635 | Screw 10x20 | 52 | 874399863 | Washer 8 (9x24x2) | | | |
| 23 | 874399966 | Screw 10x20 | 53 | 874399298 | Screw 8x16 | | | |
| 24 | 874397401 | Flanged Nut M10 | 54 | 872108983 | Arm | | | |
| 25 | 874396312 | Screw 16x110 | 55 | 872113210 | Arm Sliding Block | | | |
| 26 | 874399828 | Washer 16 (17x30x3) | 56 | 873013112 | Arm End Part | | | |
| 27 | 874399963 | Self-Locking Nut M16 | 57 | 873008404 | Bead Pressing Tool | | | |
| 28 | 874397375 | Screw 12x140 | 58 | 873002479 | Hose 6x4 L=80 | | | |
| 29 | 874399981 | Washer 12 (13x24x2, 5) | 59 | 873012447 | Hose 6x4 L=2700 | | | |
| 30 | 874399865 | Self-Locking Nut M12 | 60 | 873000218 | Hose 6x4 L=1200 | | | |



| ITEM | PART NO. | DESCRIPTION | ITEM | PART NO. | DESCRIPTION |
|------|-----------|------------------------------|------|-----------|-------------------------|
| 1 | 872113391 | PAX Riser | 31 | 872012050 | Tool Unit |
| 2 | 872113633 | Riser Cushion | 32 | 872013642 | Bead Breaking Roll |
| 3 | 872113637 | Entrainer | 33 | 872112496 | Ø25 Rollers Support |
| 4 | 873013634 | Removable Center Shaft | 34 | 873012497 | Roller |
| 5 | 873011136 | Centering Cone | 35 | 873012498 | PVC Disk |
| 6 | 872011869 | Quick Release Hub Nut | 36 | 874297036 | Bearing 20x32x7 |
| 8 | 874399935 | Screw 8x25 | 37 | 874299815 | Bearing 20x47x14 |
| 9 | 874399829 | Washer 8 (8,4x16x1,5) | 38 | 874299814 | Seeger Ring D.47 |
| 10 | 874399900 | Self-Locking Nut M8 | 39 | 874399475 | Seeger Ring D.20 |
| 11 | 873012458 | Plastic Protector | 40 | 873013556 | Roller Support Pin |
| 12 | | Screw | 41 | 874297036 | Bearing 20x32x7 |
| 13 | | Self-Locking Nut | 42 | 873013555 | Bead Pressing Roller |
| 14 | 873012051 | PAX Bead Lift Tool | 43 | 874399863 | Washer 8 (9x24x2) |
| 15 | 873013554 | Bead Flip Lever | 44 | 874399305 | Screw 8x12 |
| 16 | 874296090 | PVC Handle | 45 | 874399228 | Screw 10x25 |
| 17 | 872012507 | Spring Loaded Bead Lock Tool | 46 | 874399378 | Washer D.10 (10,5x21x2) |
| 18 | 872112508 | Plain Bead Lock Tool | | | |
| 19 | 873013639 | Arm Support | | | |
| 20 | 876613591 | Tools Shelf | | | |
| 22 | 874397786 | Screw 8x70 | | | |
| 23 | 873013557 | Dimension Indicator | | | |
| 24 | 874398848 | Washer 6 (6,6x18x1,5) | | | |
| 25 | 874398723 | Screw 6x12 | | | |
| 26 | 873013558 | Scale Bar | | | |
| 27 | 872113387 | Tool Support Arm | | | |
| 28 | 874399998 | Washer 6 (6,4x12x1,6) | | | |
| 29 | 873012555 | Pin D.10 | | | |
| 30 | 874398829 | Parallel Pin 10x50 | | | |

