

**COATS
BADA**

AMMCO

**B2908
B2907**

**AMMCO
2-Post Lift with
Overhead Channel**



Parts Identification

READ these instructions before placing unit in service. KEEP these and other materials delivered with the unit in a binder near the machine for ease of reference by supervisors and operators.

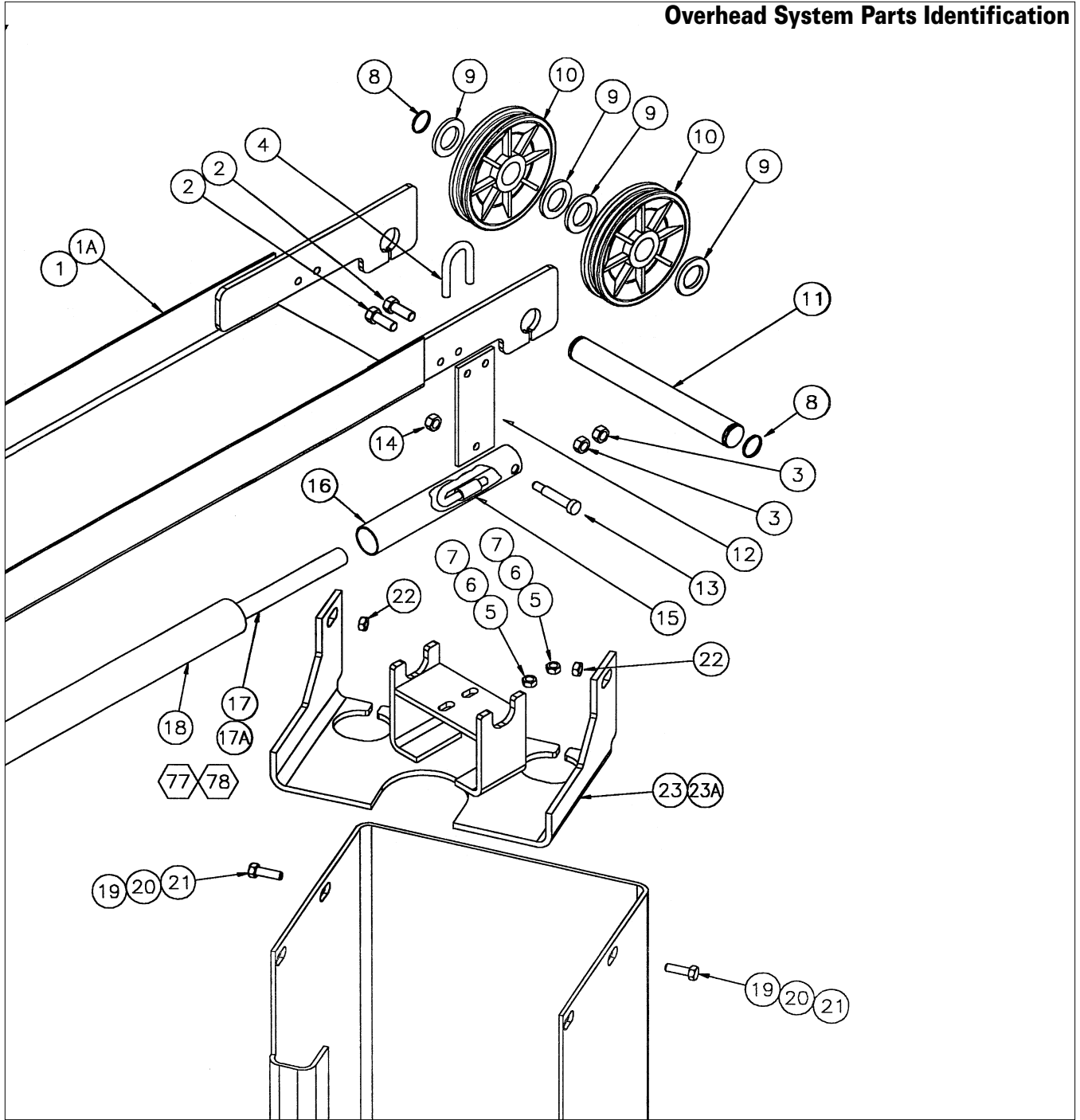
Manual Part No.: 86319
Revision Date: 12/98

HENNESSY INDUSTRIES, INC.

P.O. Box 3002, 1601 J. P. Hennessy Drive, LaVergne, TN USA 37086 615/641-7533 800/688-6359

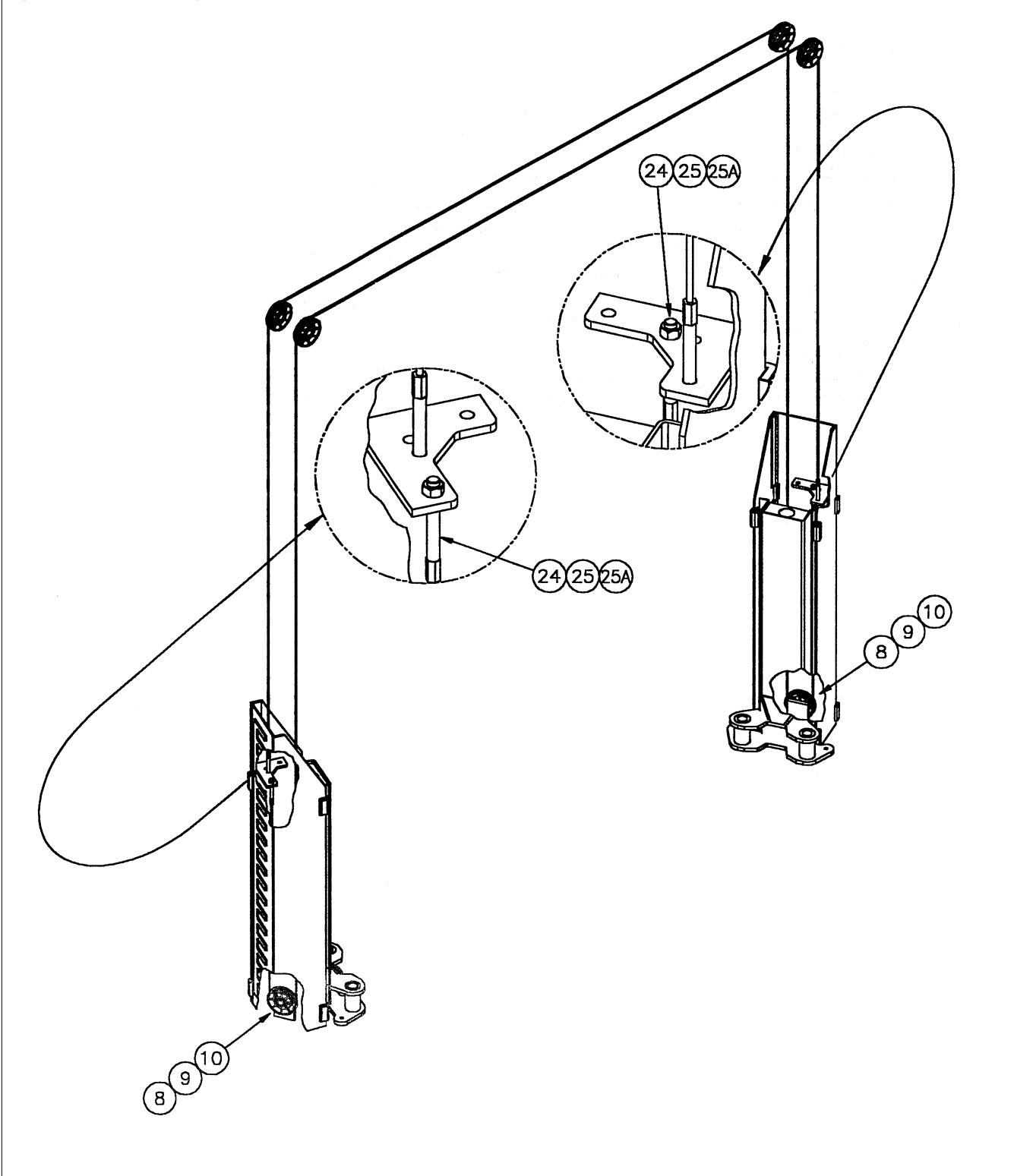
HENNESSY INDUSTRIES INC. Manufacturer of AMMCO®, COATS® and BADA® Automotive Service Equipment and Tools.

Overhead System Parts Identification



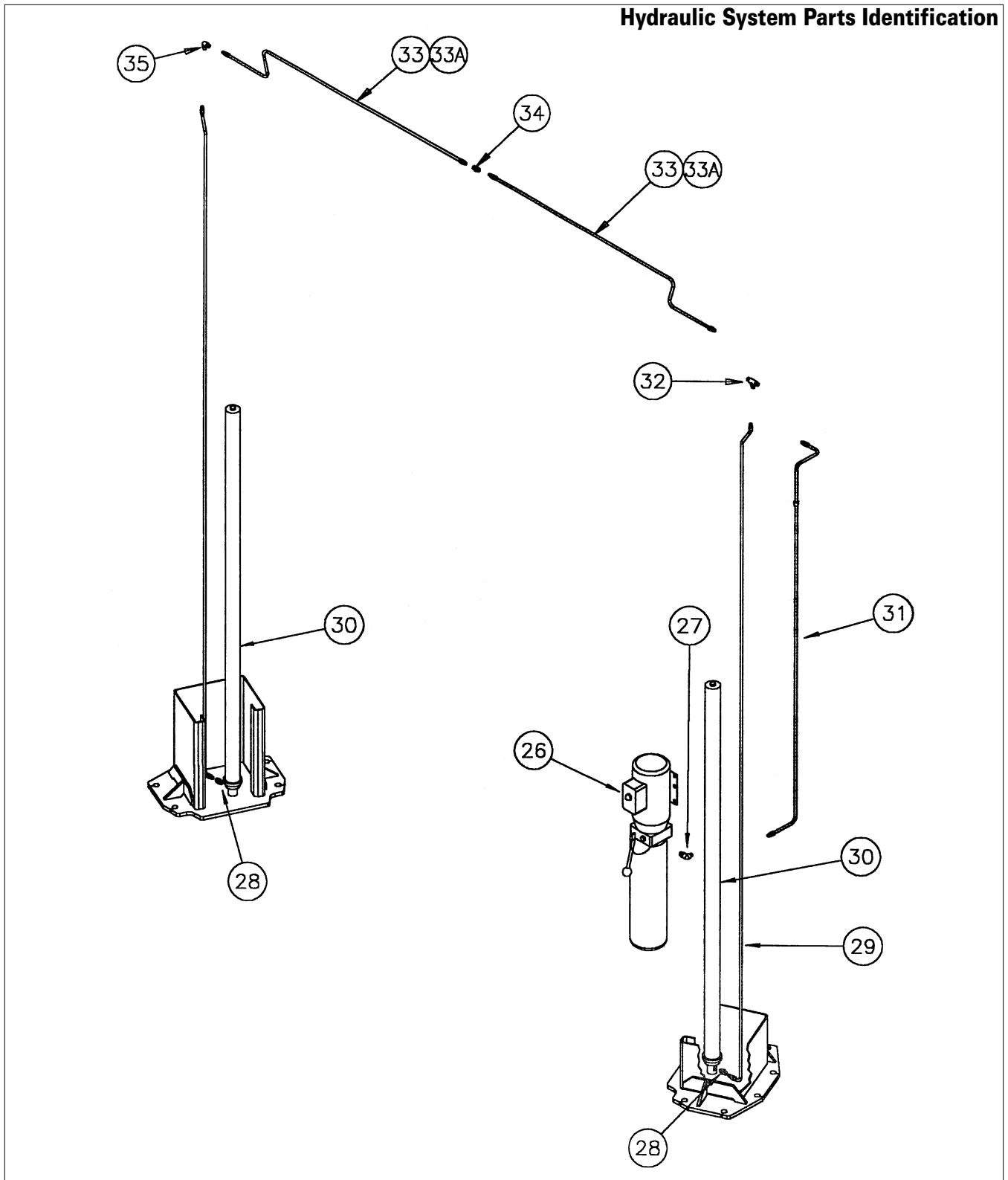
ITEM	PART NO.	QTY.	DESCRIPTION	ITEM	PART NO.	QTY.	DESCRIPTION
1	4B70095	1	Overhead Weldment (B2908)	14	4B70081	2	5/16-18 Keps Nut
1A	4B71006	1	Overhead Weldment (B2907)	15	4B36027	1	Mercury Limit Switch
2	4B31062	4	1/4-20 x 3/4" Lg Pan HD. Screw	16	4B36026	1	Switch Tube
3	4B31061	4	1/4-20 Keps Nut	17	4B70099	1	Overhead Shutoff Bar (B2908)
4	4B70060	2	U-Bolt, Overhead	17A	4B71015	1	Overhead Shutoff Bar (B2907)
5	4B31189	4	5/16-18 Hex Nut	18	4B31129	1	Foam Pad - Shutoff Bar
6	4B31330	4	5/16 Flat Washer	77	4B70096	1	Shutoff Bar Ass'y (B2908)
7	4B31331	4	5/16 Lockwasher	78	4B71014	1	Shutoff Bar Ass'y (B2907)
8	4B36014	4	1" Retaining Ring	19	4B31035	4	3/8-16 x 1" Lg Hex HD Capscrew
9	4B36013	8	1" I.D. Spacer	20	4B31036	4	3/8 Flat Washer
10	4B36025	4	Sheave Complete	21	4B31037	4	3/8 Split Lock Washer
11	4B70030	2	Shaft, Overhead	22	4B31038	4	3/8-16 Hex Nut
12	4B70051	2	Mount-Shutoff Bar	23	4B70031	1	Support, Overhead (Power Col.)
13	4B36065	2	3/8 x 1 1/2" Lg Shoulder Bolt	23A	4B70032	1	Support, Overhead (Idler Col.)

Synchronization System Parts Identification



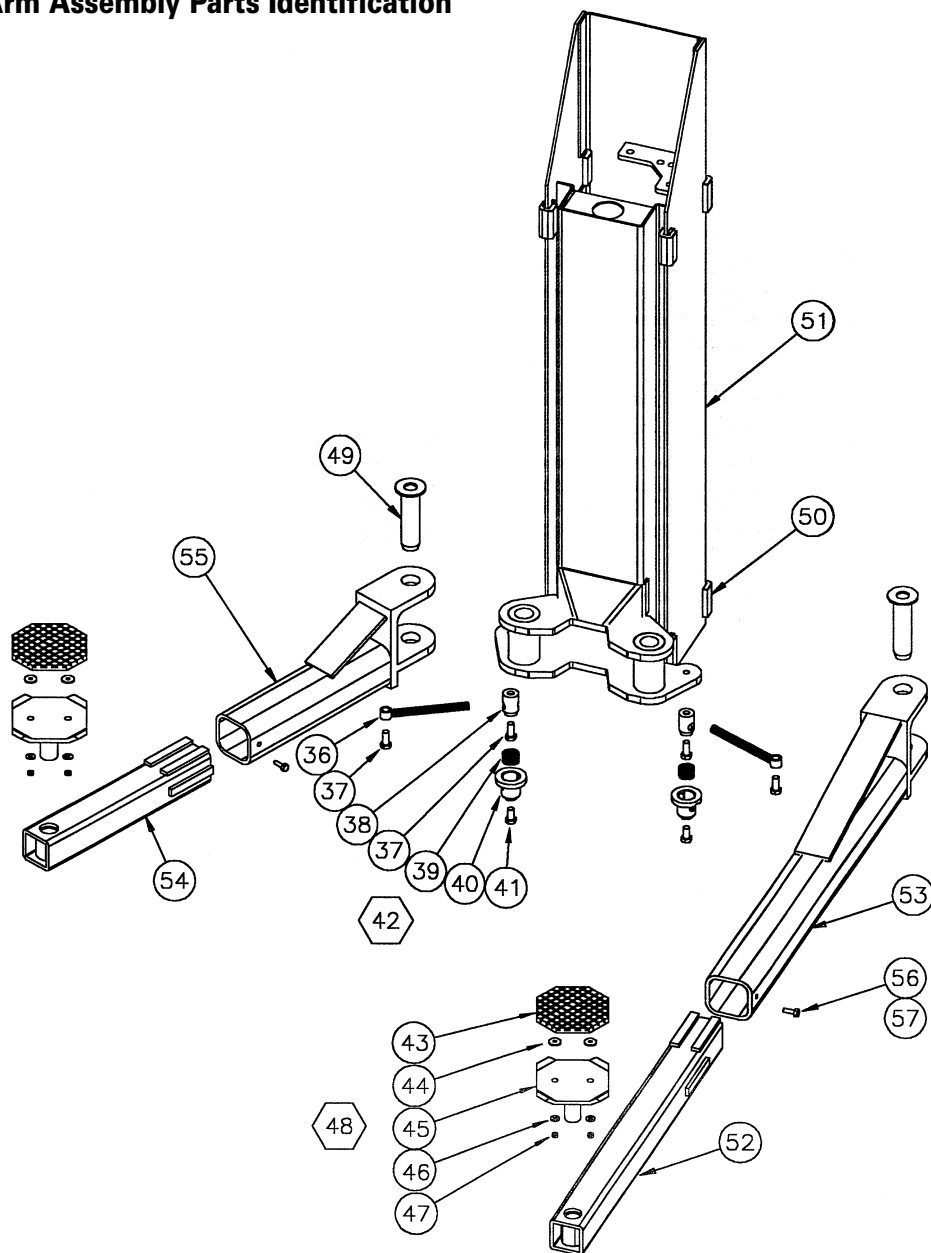
ITEM	PART NO.	QTY.	DESCRIPTION	ITEM	PART NO.	QTY.	DESCRIPTION
8	4B36014	2	1" Retaining Ring				
9	4B36013	2	1" I.D. Spacer				
10	4B36025	2	Sheave Complete				
24	4B36037	4	1/2-20 ESNA Locknut				
25	4B70093	2	Sync. Cable 33'-3" Lg. Starting S/N 700708				
25A	4B71020	2	Sync. Cable 32'-3" Model B2907				

Hydraulic System Parts Identification



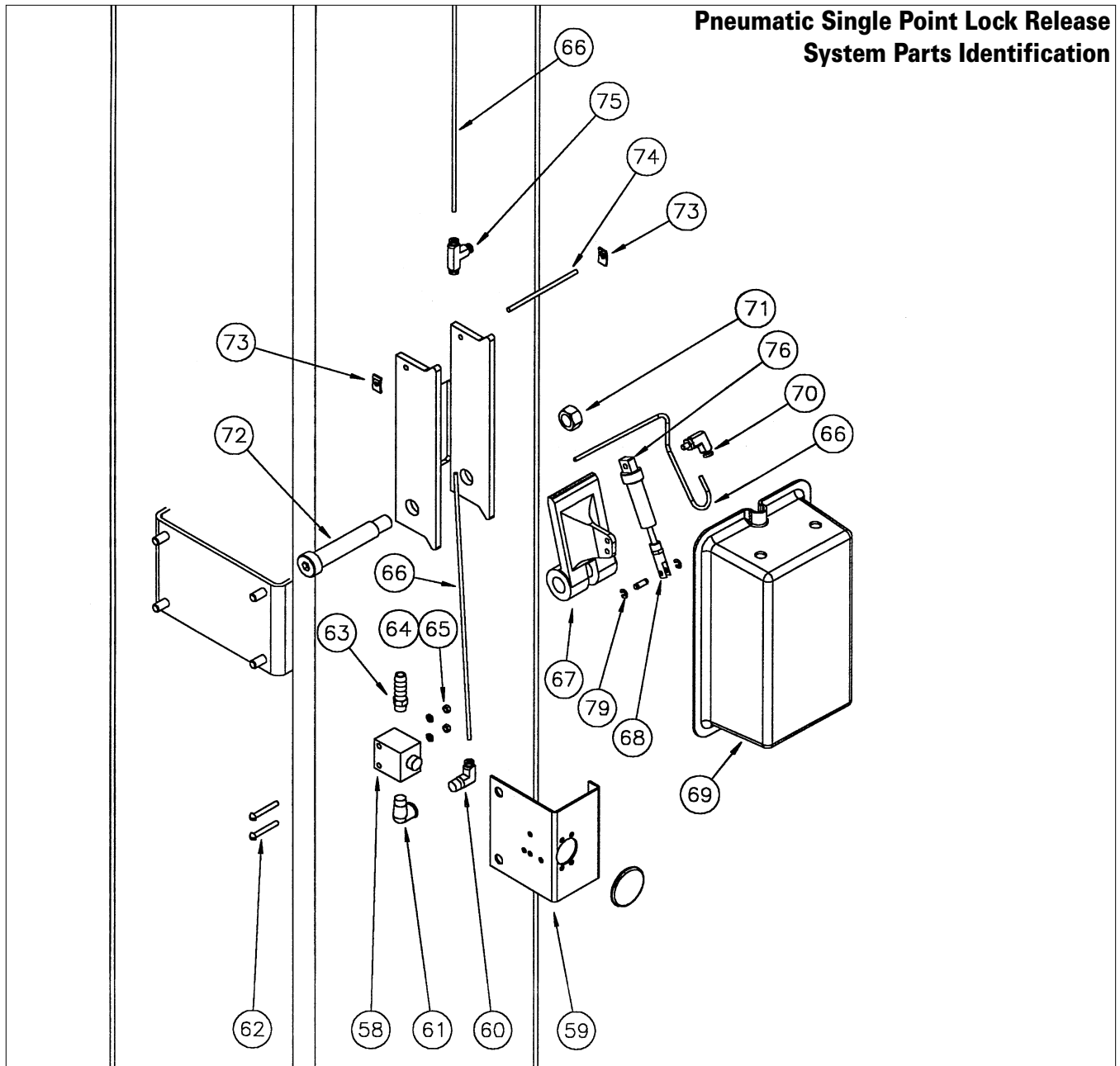
ITEM	PART NO.	QTY.	DESCRIPTION	ITEM	PART NO.	QTY.	DESCRIPTION
26	4B31292	1	208/230 V 1PH. Fenner Power Unit	31	4B71038	1	Hyd. Line, Power Unit to Overhead
	4B31293	1	208/230 V 3PH. Fenner Power Unit	32	4B31032	1	Hyd. Fitting, Union Tee
27	4B31089	1	Hyd. Fitting, Male Elbow 90 Deg.	33	4B70101	2	Hyd. Line, Overhead (B2908)
28	4B36048	2	Hyd. Fitting, 9/16 'O' Ring Union	33A	4B71042	2	Hyd. Line, Overhead (B2907)
29	4B71041	2	Hyd. Line, Cyl. to Overhead	34	4B31047	1	Hyd. Fitting, Union
30	4B36115	2	Hyd. Cylinder, 72" Stroke	35	4B38044	1	Hyd. Fitting, Union Elbow

Carriage Arm Assembly Parts Identification



ITEM	PART NO.	QTY.	DESCRIPTION	ITEM	PART NO.	QTY.	DESCRIPTION
36	4B70078	4	Link Weldment, 7" Lg	51	4B70013	2	Carriage Weldment
37	4B31112	8	1/2-13 x 1 1/2" Lg S.H. Capscrew	52	4B71011	2	9000# Rear Male Arm
38	4B31108	4	Insert, Arm Restraint	53	4B71031	2	9000# Rear Female Arm
39	4B31109	4	Compression Spring	54	4B71010	2	9000# Front Male Arm
40	4B31107	4	Sleeve Weld	55	4B71028	2	9000# Front Female Arm
41	4B31111	4	1/2-13 x 3/4" Lg H.H. Capscrew	56	4B31305	4	3/8-16 x 3/4" Lg Pan Hd. Screw, Self Tapping
42	4B70080	4	Arm Restraint Ass'y. (Items 36,38,39,40)	57	4B31037	4	3/8" Split Lock Washer
43	4B31057	4	Rubber Insert	4B71007	1	9000# Rear Pack Ass'y (Items 45,49,52,53,54,55,56,57)	
44	4B31114	8	Fender Washer	4B71008	2	9000# Front Arm Ass'y (Items 54,55,56,57)	
45	4B31133	4	Foot Pad Weldment	4B71009	2	9000# Rear Arm Ass'y (Items 52,53,56,57)	
46	4B31115	8	Flat Washer	4B11024	4	Foot Pad Ass'y (Items 43,44,45,46,47)	
47	4B31061	8	1/4-20 Keps Nut				
48	4B11052	4	Rubber Insert Kit (Items 43,44,46,47)				
49	4B70062	4	Arm Pin				
50	4B31023	16	Slide Block Assembly				

Pneumatic Single Point Lock Release System Parts Identification



ITEM PART NO.	QTY.	DESCRIPTION	ITEM PART NO.	QTY.	DESCRIPTION		
58	4B37016	1	Lock Release Air Valve	71	4B37013	2	1/2-13 ESNA Locknut
59	4B37015	1	Valve Bracket	72	4B37011	2	5/8 Dia x 3" Lg Shoulder Bolt
60	4B37019	1	90 Deg. Elbow 1/8 NPT x Tube	73	4B37031	4	5/32 Speed Nut
61	4B37020	1	90 Deg. Elbow, 1/8 NPT	74	4B37042	2	Pivot Rod - Air Cylinder
62	4B37022	2	#8-32 x 1 1/4" Lg Pan Hd Screw	75	4B37032	1	1/8" Tube, Union Tee
63	4B37021	1	3/8" Hose Barb	76	4B37026	2	Air Cylinder
64	4B37023	2	#8 Lock Washer	79	4B37119	1	Lock Pin Kit
65	4B37024	2	#8-32 Hex Nut				
66	4B37035	1	Air Line	4B37014	1	Button Valve Bracket Ass'y (Items 59...65)	
67	4B37081	2	Locking Pawl	4B37025	2	Air Cylinder Ass'y (Items 68,70,76)	
68	4B37120	2	Clevis - Air Cylinder				
69	4B37072	2	SPLR Cover (Snap On)				
70	4B37041	2	Swivel Elbow - Air Cylinder				

**COATS
BADA**

AMMCO

**B2908
B2907**

**AMMCO
2-Post Lift with
Overhead Channel**



Parts Identification

READ these instructions before placing unit in service. KEEP these and other materials delivered with the unit in a binder near the machine for ease of reference by supervisors and operators.

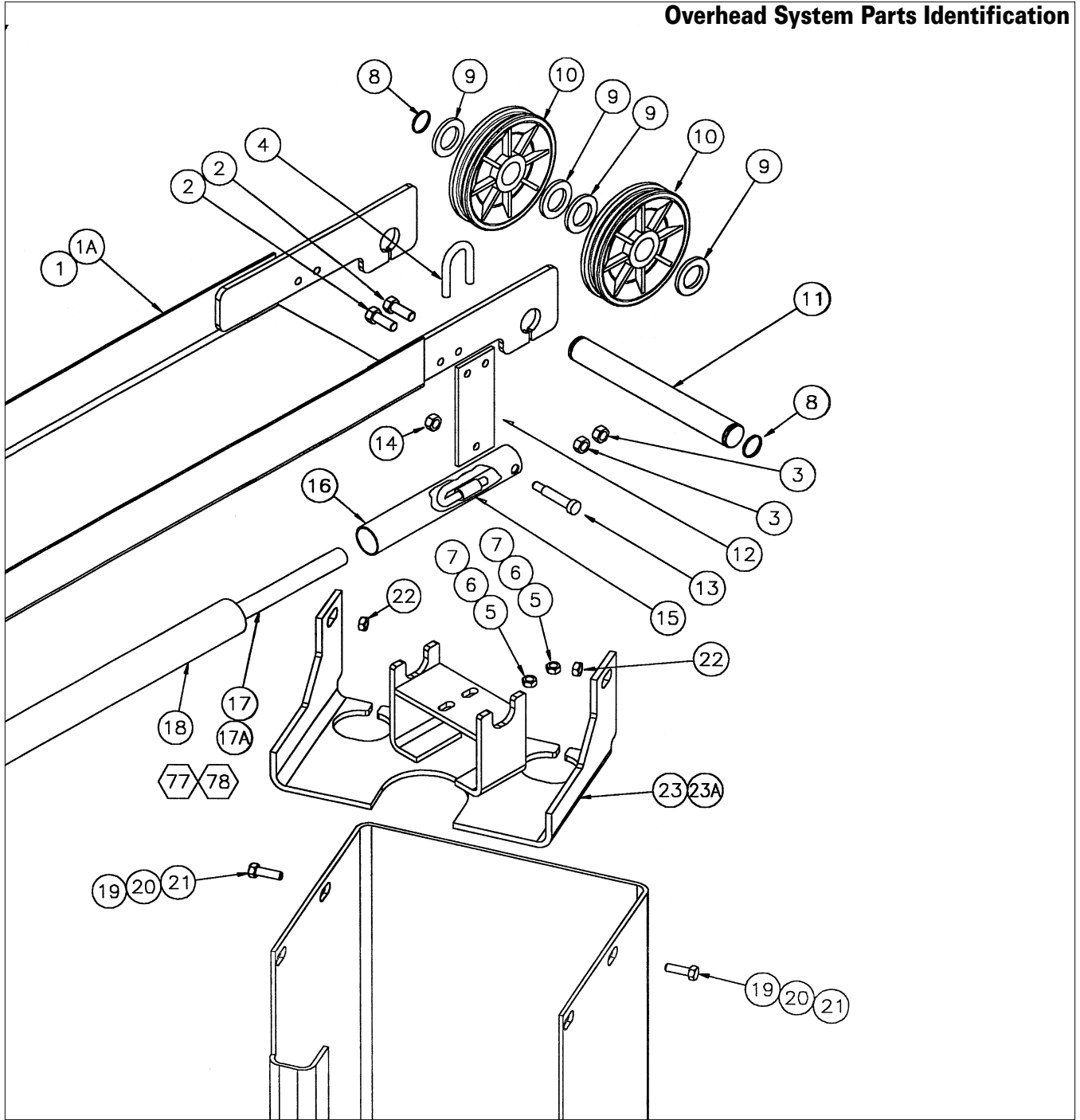
Manual Part No.: 86319
Revision Date: 12/98

HENNESSY INDUSTRIES, INC.

P.O. Box 3002, 1601 J. P. Hennessy Drive, LaVergne, TN USA 37086 615/641-7533 800/688-6359

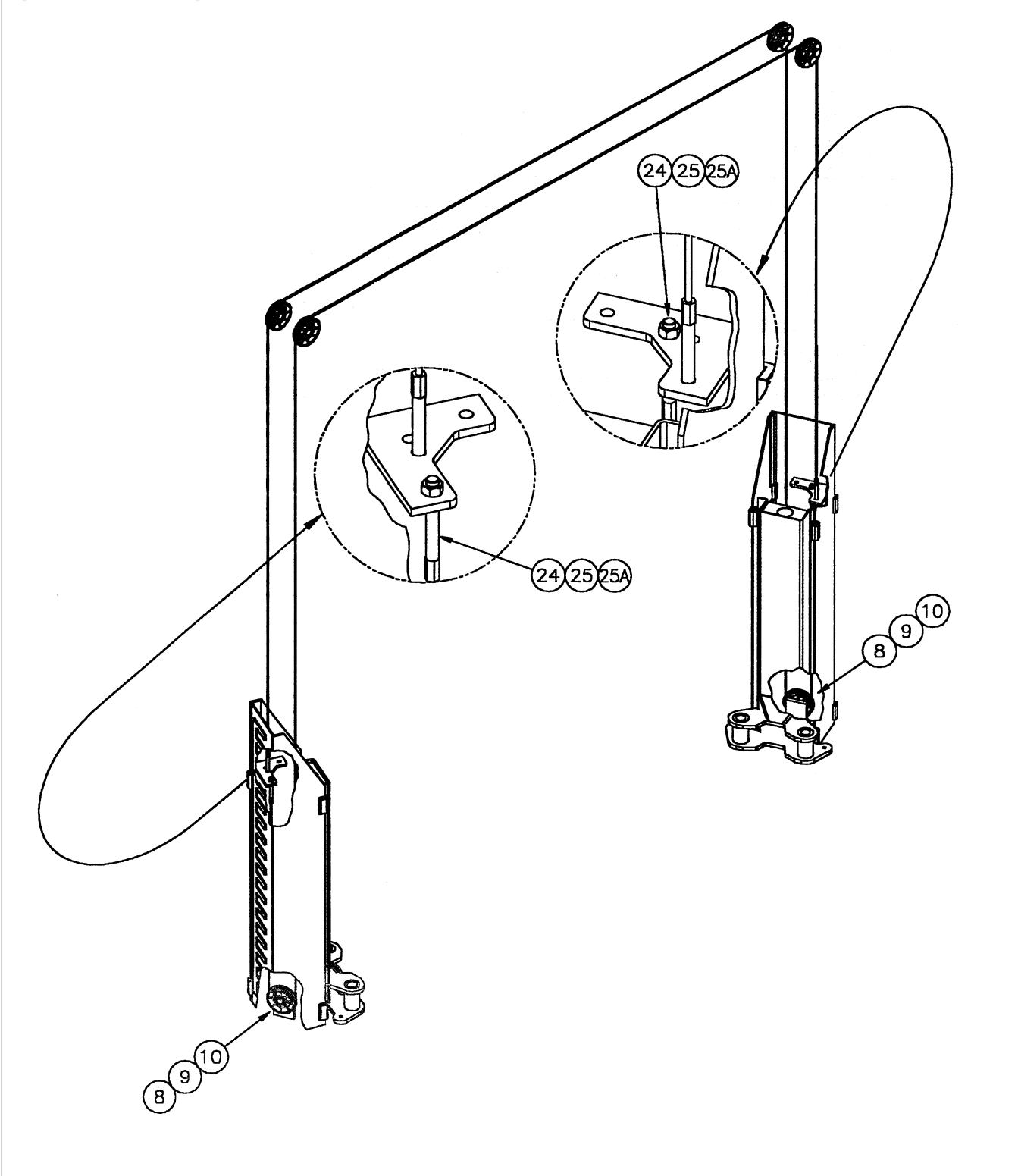
HENNESSY INDUSTRIES INC. Manufacturer of AMMCO®, COATS® and BADA® Automotive Service Equipment and Tools.

Overhead System Parts Identification



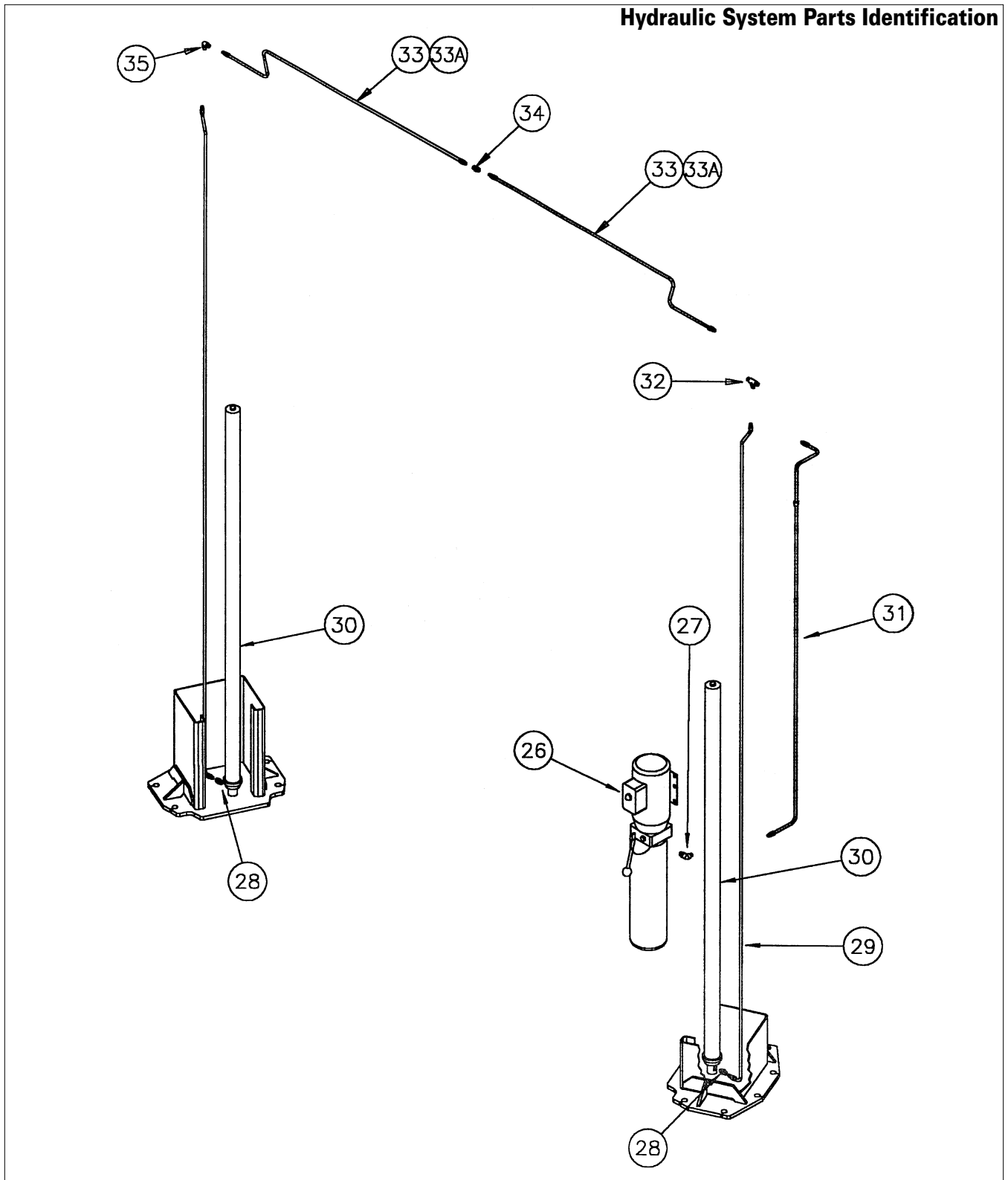
ITEM	PART NO.	QTY.	DESCRIPTION	ITEM	PART NO.	QTY.	DESCRIPTION
1	4B70095	1	Overhead Weldment (B2908)	14	4B70081	2	5/16-18 Keps Nut
1A	4B71006	1	Overhead Weldment (B2907)	15	4B36027	1	Mercury Limit Switch
2	4B31062	4	1/4-20 x 3/4" Lg Pan HD. Screw	16	4B36026	1	Switch Tube
3	4B31061	4	1/4-20 Keps Nut	17	4B70099	1	Overhead Shutoff Bar (B2908)
4	4B70060	2	U-Bolt, Overhead	17A	4B71015	1	Overhead Shutoff Bar (B2907)
5	4B31189	4	5/16-18 Hex Nut	18	4B31129	1	Foam Pad - Shutoff Bar
6	4B31330	4	5/16 Flat Washer	77	4B70096	1	Shutoff Bar Ass'y (B2908)
7	4B31331	4	5/16 Lockwasher	78	4B71014	1	Shutoff Bar Ass'y (B2907)
8	4B36014	4	1" Retaining Ring	19	4B31035	4	3/8-16 x 1" Lg Hex HD Capscrew
9	4B36013	8	1" I.D. Spacer	20	4B31036	4	3/8 Flat Washer
10	4B36025	4	Sheave Complete	21	4B31037	4	3/8 Split Lock Washer
11	4B70030	2	Shaft, Overhead	22	4B31038	4	3/8-16 Hex Nut
12	4B70051	2	Mount-Shutoff Bar	23	4B70031	1	Support, Overhead (Power Col.)
13	4B36065	2	3/8 x 1 1/2" Lg Shoulder Bolt	23A	4B70032	1	Support, Overhead (Idler Col.)

Synchronization System Parts Identification



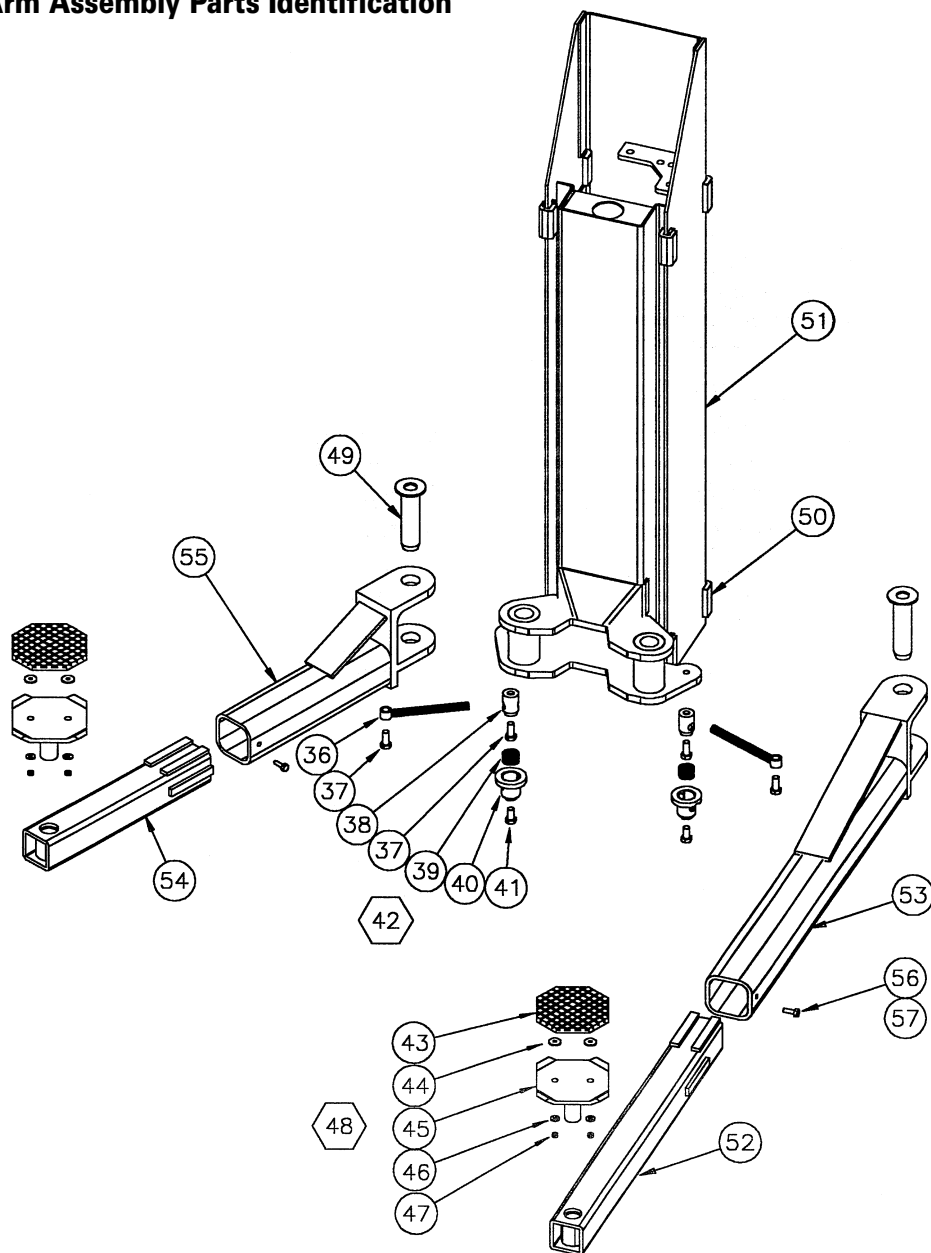
ITEM	PART NO.	QTY.	DESCRIPTION	ITEM	PART NO.	QTY.	DESCRIPTION
8	4B36014	2	1" Retaining Ring				
9	4B36013	2	1" I.D. Spacer				
10	4B36025	2	Sheave Complete				
24	4B36037	4	1/2-20 ESNA Locknut				
25	4B70093	2	Sync. Cable 33'-3" Lg. Starting S/N 700708				
25A	4B71020	2	Sync. Cable 32'-3" Model B2907				

Hydraulic System Parts Identification



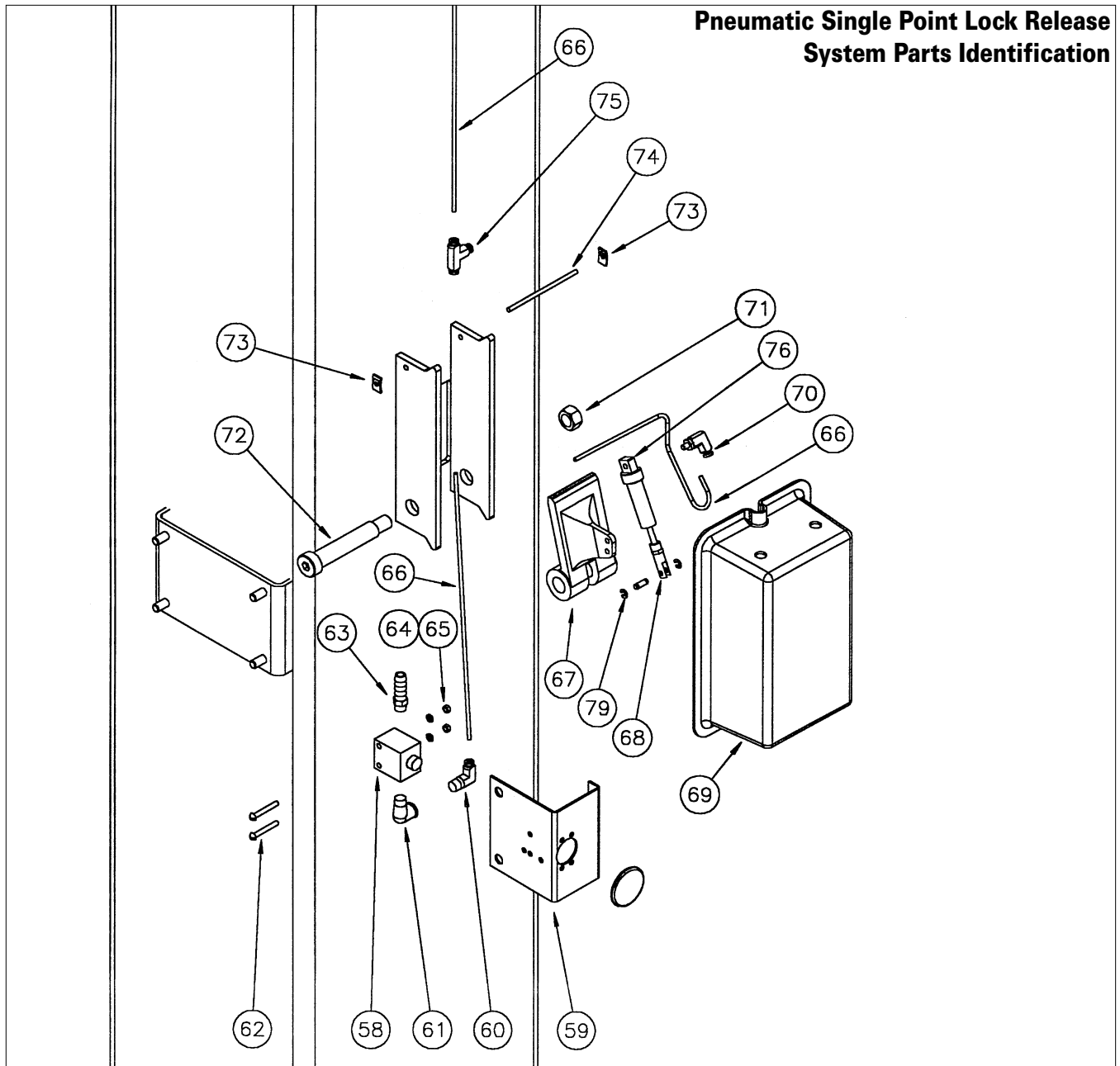
ITEM	PART NO.	QTY.	DESCRIPTION	ITEM	PART NO.	QTY.	DESCRIPTION
26	4B31292	1	208/230 V 1PH. Fenner Power Unit	31	4B71038	1	Hyd. Line, Power Unit to Overhead
	4B31293	1	208/230 V 3PH. Fenner Power Unit	32	4B31032	1	Hyd. Fitting, Union Tee
27	4B31089	1	Hyd. Fitting, Male Elbow 90 Deg.	33	4B70101	2	Hyd. Line, Overhead (B2908)
28	4B36048	2	Hyd. Fitting, 9/16 'O' Ring Union	33A	4B71042	2	Hyd. Line, Overhead (B2907)
29	4B71041	2	Hyd. Line, Cyl. to Overhead	34	4B31047	1	Hyd. Fitting, Union
30	4B36115	2	Hyd. Cylinder, 72" Stroke	35	4B38044	1	Hyd. Fitting, Union Elbow

Carriage Arm Assembly Parts Identification



ITEM	PART NO.	QTY.	DESCRIPTION	ITEM	PART NO.	QTY.	DESCRIPTION
36	4B70078	4	Link Weldment, 7" Lg	51	4B70013	2	Carriage Weldment
37	4B31112	8	1/2-13 x 1 1/2" Lg S.H. Capscrew	52	4B71011	2	9000# Rear Male Arm
38	4B31108	4	Insert, Arm Restraint	53	4B71031	2	9000# Rear Female Arm
39	4B31109	4	Compression Spring	54	4B71010	2	9000# Front Male Arm
40	4B31107	4	Sleeve Weld	55	4B71028	2	9000# Front Female Arm
41	4B31111	4	1/2-13 x 3/4" Lg H.H. Capscrew	56	4B31305	4	3/8-16 x 3/4" Lg Pan Hd. Screw, Self Tapping
42	4B70080	4	Arm Restraint Ass'y. (Items 36,38,39,40)	57	4B31037	4	3/8" Split Lock Washer
43	4B31057	4	Rubber Insert				
44	4B31114	8	Fender Washer	4B71007	1	9000# Rear Pack Ass'y (Items 45,49,52,53,54,55,56,57)	
45	4B31133	4	Foot Pad Weldment	4B71008	2	9000# Front Arm Ass'y (Items 54,55,56,57)	
46	4B31115	8	Flat Washer	4B71009	2	9000# Rear Arm Ass'y (Items 52,53,56,57)	
47	4B31061	8	1/4-20 Keps Nut	4B11024	4	Foot Pad Ass'y (Items 43,44,45,46,47)	
48	4B11052	4	Rubber Insert Kit (Items 43,44,46,47)				
49	4B70062	4	Arm Pin				
50	4B31023	16	Slide Block Assembly				

Pneumatic Single Point Lock Release System Parts Identification



ITEM PART NO.	QTY.	DESCRIPTION	ITEM PART NO.	QTY.	DESCRIPTION		
58	4B37016	1	Lock Release Air Valve	71	4B37013	2	1/2-13 ESNA Locknut
59	4B37015	1	Valve Bracket	72	4B37011	2	5/8 Dia x 3" Lg Shoulder Bolt
60	4B37019	1	90 Deg. Elbow 1/8 NPT x Tube	73	4B37031	4	5/32 Speed Nut
61	4B37020	1	90 Deg. Elbow, 1/8 NPT	74	4B37042	2	Pivot Rod - Air Cylinder
62	4B37022	2	#8-32 x 1 1/4" Lg Pan Hd Screw	75	4B37032	1	1/8" Tube, Union Tee
63	4B37021	1	3/8" Hose Barb	76	4B37026	2	Air Cylinder
64	4B37023	2	#8 Lock Washer	79	4B37119	1	Lock Pin Kit
65	4B37024	2	#8-32 Hex Nut				
66	4B37035	1	Air Line	4B37014	1	Button Valve Bracket Ass'y (Items 59...65)	
67	4B37081	2	Locking Pawl	4B37025	2	Air Cylinder Ass'y (Items 68,70,76)	
68	4B37120	2	Clevis - Air Cylinder				
69	4B37072	2	SPLR Cover (Snap On)				
70	4B37041	2	Swivel Elbow - Air Cylinder				

