

# COATS®

## 1250 Wheel Balancer



### *Parts Identification*

READ these instructions before placing unit in service KEEP these and other materials delivered with the unit in a binder near the machine for ease of reference by supervisors and operators.

**HENNESSY INDUSTRIES, INC.**

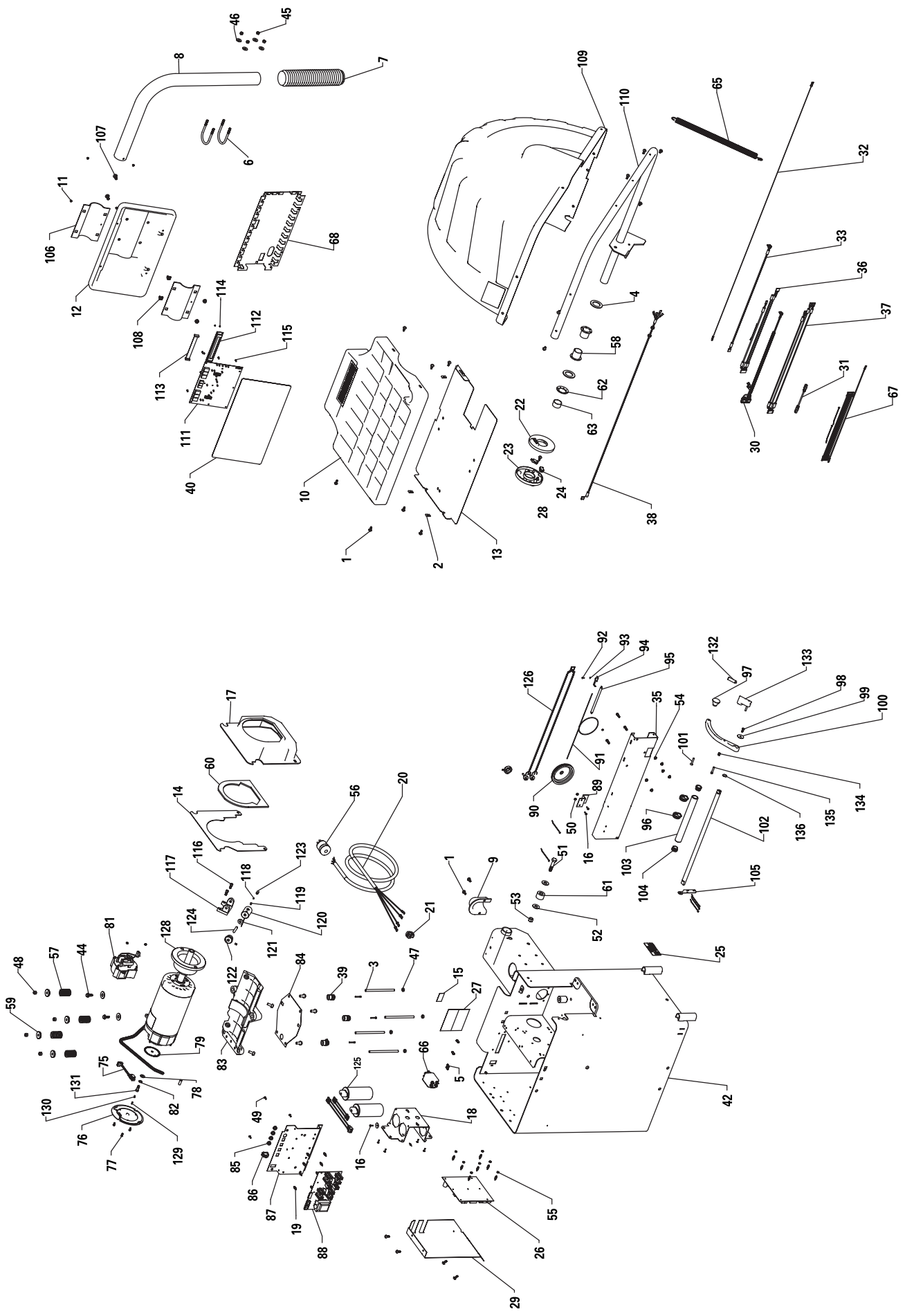
1601 J. P. Hennessy Drive, LaVergne, TN USA 37086-3565 615/641-7533 800/688-6359

HENNESSY INDUSTRIES INC. Manufacturer of AMMCO®, COATS® and BADA® Automotive Service Equipment and Tools.

Manual Part No.: 8114308 05

Revision: 12/05

# Parts Identification



These pages include parts breakdowns with exploded view illustrations to help with ordering replacement or spare kits. Assemblies are noted where it is recommended that individual parts not be ordered separately. These parts are available only as assemblies because some parts are stacked, pinned, or press fitted, then drilled, machined, or bored. Close tolerances must be maintained in assembly. Every effort is made to supply accurate exploded views, however, due to interim changes in manufacturing operations, some units may not be exactly as illustrated.

be ordered separately. These parts are available only as assemblies because some parts are stacked, pinned, or press fitted, then drilled, machined, or bored. Close tolerances must be maintained in assembly. Every effort is made to supply accurate exploded views, however, due to interim changes in manufacturing operations, some units may not be exactly as illustrated.

ITEM	PART NO.	DESCRIPTION	ITEM	PART NO.	DESCRIPTION	ITEM	PART NO.	DESCRIPTION
1	8106301	1/4" Hex Self-Tap Screw	47	8301033	3/8-16 Hex Jam Nut	97	8114253	Cone
2	8106304	1/4-20 Tinnerman Nut	48	8301035	3/8-16 Nyloc Nut	98	940802	6MM x 16MM HHC Screw
3	8108727	Threaded Rod	49	8301082	#8-32x1/2 PHM Screw	99	8111032	1/4 Fender Washer
4	8109944	Hood Bar Washer	50	8301084	#8-32 Kep Nut	100	8114373	Arm
5	8110560	#8-32x3/4 Screw	51	8301120	1/2-13x2-1/2 HH Bolt	101	8111173	1/4-20 x 1-1/2 FHS Screw
6	8110789	Bolt, 5/16-18 "U"	52	8301121	1/2 Flat Washer	102	80180018	A & D Rod
7	8110800	Pod Tube Cover	53	8301122	1/2-13 Hex Nut	103	8114255	A & D Tube
8	8110805	Support, Pod Tube	54	8301143	1/4-20 Hex Nut	104	8114203	Distance Rod Bushing
9	8111029	Rear Harness Cover	55	8301804	#10-32 Hex Nut	105	8114254	A & D Pendulum
10	8111034	Weight Tray Assembly	56	8305076	220V, 1 PH Plug	106	8110795	Pod Mounting Bracket
11	8111055	Nut, #6-32 Acorn	57	8114410	440V, 3 PH Plug (Export)	107	8110823	3/8-16 Carriage Bolt
12	8111057-1	Pod Electronics Sub Assembly	58	8307008	Piezo Spring	108	8143044	3/8-16 Tinnerman Nut
13	8111064	Weight Tray Shield	59	8307014	Flanged Nylon Bearing	109	8113620	Wheel Guard
14	8111308	Motor Cover Shield	60	8308036	Piezo Spring Retainer	110	8114319	Hood Bar W/C
15	8111519	UL & CSA Decal	61	8308536	Motor Gasket	111	8114200	PCB Display
16	8111542	#8-32 X 5/8" SEM Screw	62	8309008	Rubber Hood Stop	112	8114302	Vacuum Florescent Display
17	8111552	Motor Shroud Assembly	63	8109945	1-1/2" Retainer Washer	113	8114313	VFD Cable
18	8111860	Capacity Panel Assembly	64	8109949	Hood Bar Cap	114	928487	4-40 x 3/16 Pan Hd. Screw
19	8112208	8-32 male, 3/8" Standoff	65	8308062	Hood Spring	115	8301067	6-32 Phillip Hd. Screw
20	8113101	Power Cord Assembly	66	8113845	EMI Line Filter (Austr. Export)	116	8182149	5/16 x 3/4 HHC Screw
21	8113102	Power Cord Assy (440 V Export)	67	8114420	Filter Wire Assembly (Austr. Export)	117	8114239	Laser Bracket
22	8113332	Hood Switch Cam/Cover	68	8113624	EMC Shield, UL Model (Austr. Export)	118	8182025	1/4" Ball
23	8113333	Hood Switch Housing	69	8110923	Encoder Assembly	119	902308	1/4" Set Screw
24	8113334	Limit Switch	70	8308513	Rear End Bell Cover	120	8114326	Laser Housing Assembly
25	8113892	Danger Decal	71	8112191	10-24 x .50 HHMS Screw	121	8114242	Plastic Washer
26	8113907	Processor PCB	72	8107635	5/16 Plain Washer	122	8114241	Knob
27	8113927	Caution Decal	73	8308817	Rotary Shutter	123	8114243	Modified Screw
28	8114184	Cover	74	8114265	Fan Assembly, 220 VAC	124	8114237	3/8 x 2 Dowel
29	8114208	240 VAC Harness Assembly	75	8104200	3/8 Lock, Internal Tooth Washer	125	8112356	Capacitor
30	8114420	440 VAC Harness Assy (Export)	76	8110430	Motor Cradle	126	8114257	A & D Pots with Harness Assy
31	8114211	Cat 5, 2 Meter Lg. Cable	77	8112182	Flex Plate	128	8114346	Motor Replacement Kit
32	8114212	Drain Wire Assembly	78	928347	Hole Plug	129	8113560	Carbon Bushing
33	8114217	Encoder Cable Assembly	79	8305802	ON/OFF Switch	130	8113561	Brush Spring
34	8114251	A & D Bracket	80	8110821	Power Panel	131	8113559	Brush Holder
35	8114259	MCB Cable Assembly	81	8114159	Motor Control PCB	132	8114378	Line Laser
36	8114260	Piezo Harness Assembly	82	8114258	A & D Pot Bracket	133	8114376	Line Laser Holder
37	8114262	Hood Switch Cable Assembly	83	8114327	Distance Pot Pulley	134	8114380	Compression Spring
38	8114266	Piezo Assembly	84	80180022	String	135	8114379	SHC 1/4-20 x 1-1/4 Ig.Screw
39	8114261	Touch Panel	85	80180020	Spring Bracket, 3MM Screw	136	903174	Retaining Ring
40	8114151	Special Shoulder Bolt	86	80180021	Washer 3MM			
41	8181183	5/16-18 Nyloc Nut	87	80180019	String Bracket			
42	8301032	3/8 Flat Washer	88	80180023	Spring			
			89	8114264	Hose Clamp			

