

WHEEL BALANCER

105024/105024C

DRAWINGS & PART CODE



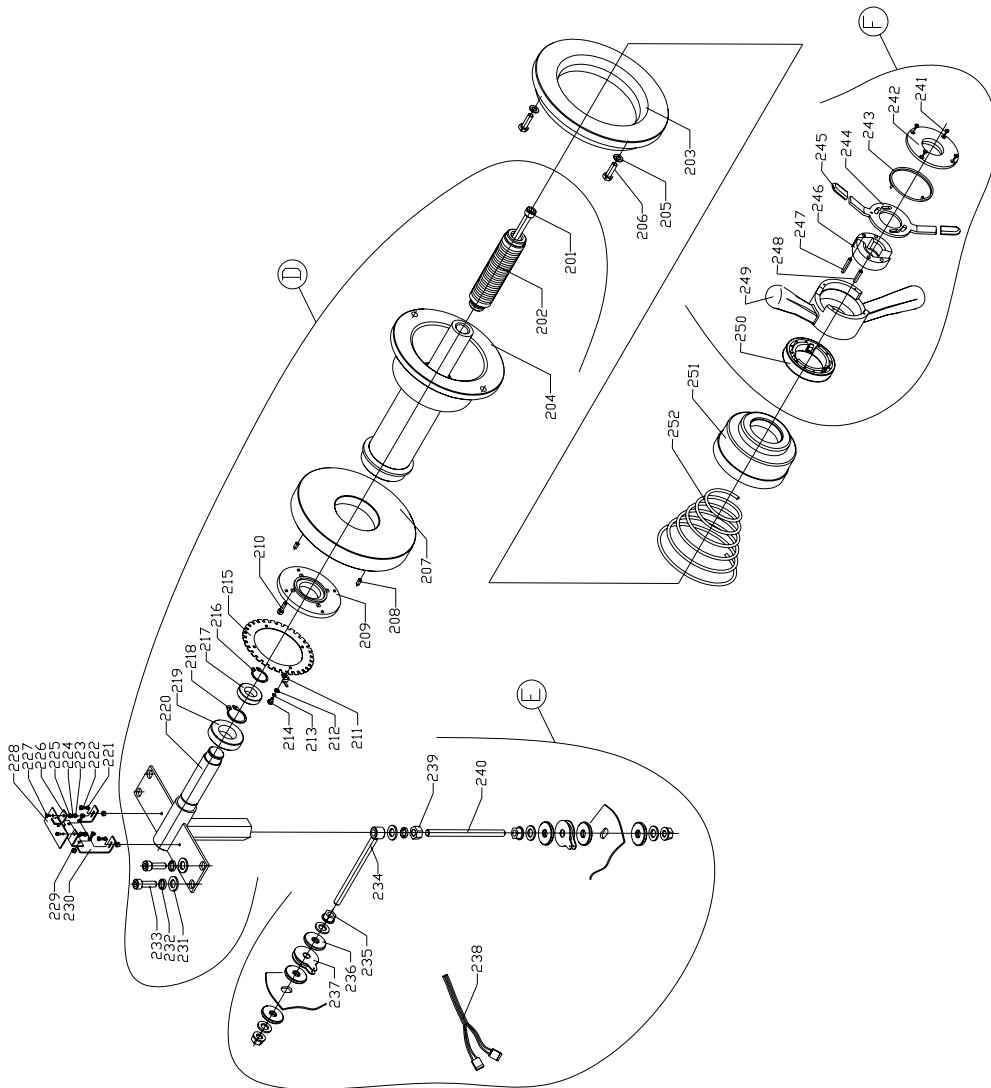
2004.12

105024/105024C	Fig. A	0100	CABIN
----------------	--------	------	-------

No.	PART CODE	DESCRIPTION	QUANTITY	NOTE
101	1050240101	Cabin	1	
102	1050240102	Frame cover	1	
103	1050240103	Nut	2	M5*10
104	1050240104	Belt	1	
105	1050240105	Washer	4	8
106	1050240106	Spring washer	4	8
107	1050240107	Bolt	4	M8*25
108	1050240108	Pulley	1	
109	1050240109	Retaining pin	1	
110	1050240110	Motor	1	110/220V 50/60HZ
111	1050240111	Cable	1	
112	1050240112	Transformer	1	
113	1050240113	Nylon spacer	4	
114	1050240114	Power board	1	
115	1050240115	Insulated paper	1	
116	1050240116	Resistance	1	
117	1050240117	Clip	1	
118	1050240118	Screw	3	M4*10
119	1050240119	Spring washer	3	4
120	1050240120	Washer	3	4
121	1050240121	Handle	2	
122	1050240122	Cone 1#	1	
123	1050240123	Cone 2#	1	
124	1050240124	Cone 3#	1	
125	1050240125	Width gauge	1	
126	1050240126	Socket cap screw	1	M6*16
127	1050240127	Distance gauge head	1	
128	1050240128	Scale rod	1	
129	1050240129	Scale guide	1	
130	1050240130	Circlip	2	
131	1050240131	Scale support	1	
132	1050240132	Screw	2	M5*12
133	1050240133	Scale end guide	1	
134	1050240134	Spring	1	
135	1050240135	Washer	1	6
136	1050240136	Balance weight hammer	1	

105024/105024C	Fig. A	0100	CABIN
----------------	--------	------	-------

No.	PART CODE	DESCRIPTION	QUANTITY	NOTE
137	1050240137	Cover with weight-tray	1	
138	1050240138	Screw	4	M5*12
139	1050240139	Panel	1	
140	1050240140	Computer board	1	
141	1050240141	Spring	1	
142	1050240142	Tube for hood	1	
143	1050240143	Support	1	
144	1050240144	Microswitch	1	
145	1050240145	Washer	2	4
146	1050240146	Elastic washer	2	10
147	1050240147	Screw	2	M4*30
148	1050240148	Washer	2	10
149	1050240149	Elastic washer	2	10
150	1050240150	Screw	2	M10*20
151	1050240151	Frame lock ring	1	
152	1050240152	Nut	2	M6
153	1050240153	Screw	1	M6*40
154	1050240154	Screw	1	
155	1050240155	Nut	2	M10
156	1050240156	Tube frame	1	
157	1050240157	Screw	2	M10*50
158	1050240158	Hood	1	
159	1050240159	Self tapping screw	2	M5*12
160	1050240160	Main switch	1	
A	1050240161	Distance gauge assembly	1	Kit
B	1050240162	Hood assembly	1	Kit
C	1050240163	Corn assembly	1	Kit of three



105024/105024C	Fig. B	0200	AXLE
----------------	--------	------	------

No.	PART CODE	DESCRIPTION	QUANTITY	NOTE
201	1050240201	Screw	1	M10*60
202	1050240202	Thread rod	1	
203	1050240203	Flange	1	
204	1050240204	Main shaft	1	
205	1050240205	Washer	2	8
206	1050240206	Bolt	2	M8*25
207	1050240207	Pulley	1	
208	1050240208	Screw	2	M5*10
209	1050240209	Bearing cover	1	
210	1050240210	Screw	4	M5*10
211	1050240211	Zero point index	1	
212	1050240212	Elastic washer	4	4
213	1050240213	Washer	4	4
214	1050240214	Screw	4	M4*8
215	1050240215	Phase disk	1	
216	1050240216	Circlip	1	25
217	1050240217	Bearing	1	6005Z
218	1050240218	Circlip	1	
219	1050240219	Bearing	1	6006Z
220	1050240220	Spindle	1	
221	1050240221	Elastic washer	4	5
222	1050240222	Screw	4	M5*12
223	1050240223	Nut	2	M3
224	1050240224	Elastic washer	2	3
225	1050240225	Washer	2	3
226	1050240226	Adjustable plank	1	
227	1050240227	Screw	2	M3*8
228	1050240228	Photo cell	1	
229	1050240229	Nut	2	M5
230	1050240230	Support plank	1	
231	1050240231	Washer	9	10
232	1050240232	Elastic washer	5	10
233	1050240233	Screw	4	M10*20
234	1050240234	Eye rod	1	
235	1050240235	Nut	4	M10

105024/105024C	Fig. B	0200	AXLE
----------------	--------	------	------

No.	PART CODE	DESCRIPTION	QUANTITY	NOTE
236	1050240236	Washer	4	
237	1050240237	Piezo sensor	2	
238	1050240238	Cable of sensor	1	
239	1050240239	Nut	1	M10
240	1050240240	Thread rod	1	
241	1050240241	Self tapping screw	4	
242	1050240242	Cover	1	
243	1050240243	Spring	1	
244	1050240244	Locking plank	1	
245	1050240245	Plastic cover	2	
246	1050240246	Locking teeth	1	Pair
247	1050240247	Pin	1	Ø5*35
248	1050240248	Pin	1	Ø5*20
249	1050240249	Handle body	1	
250	1050240250	Protecting ring	1	
251	1050240251	Rubber bowl	1	
252	1050240252	Spring	1	
D	1050240253	Main shaft assembly	1	Kit
E	1050240254	Sensor assembly	1	Kit
F	1050240255	Quick locking handle assembly	1	Kit